

# Byrnes Floorplan

Floor 1

Bryan Mall Circle



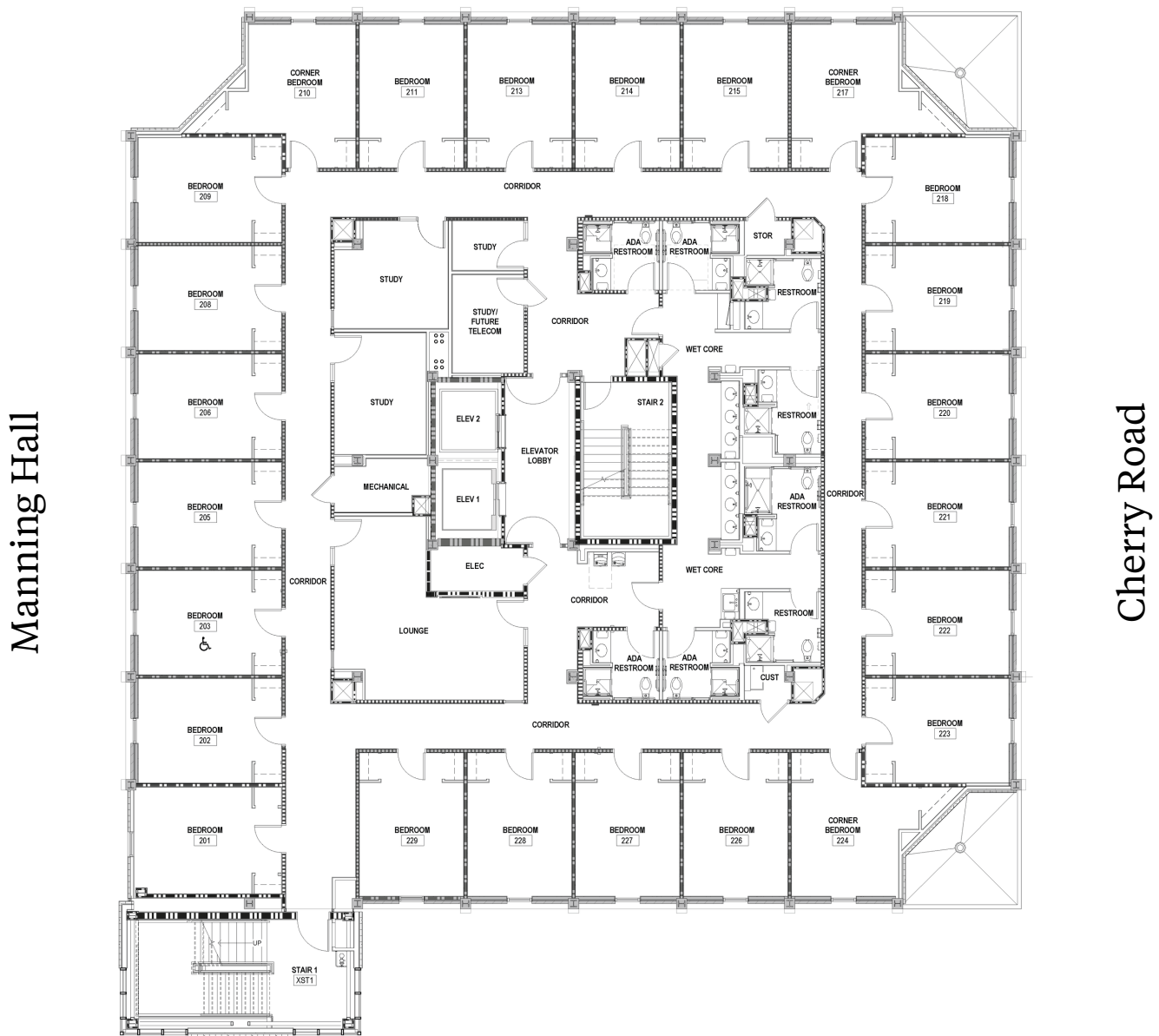
Hendrix Student Center

Room numbers identify the floor and room. The first two numbers is the floor, the next two numbers is the room, and the 1 or 2 identifies a bed in the room. For example, room 0229-2 is room 29 on the second floor.

# Byrnes Floorplan

Floor 2

Bryan Mall Circle



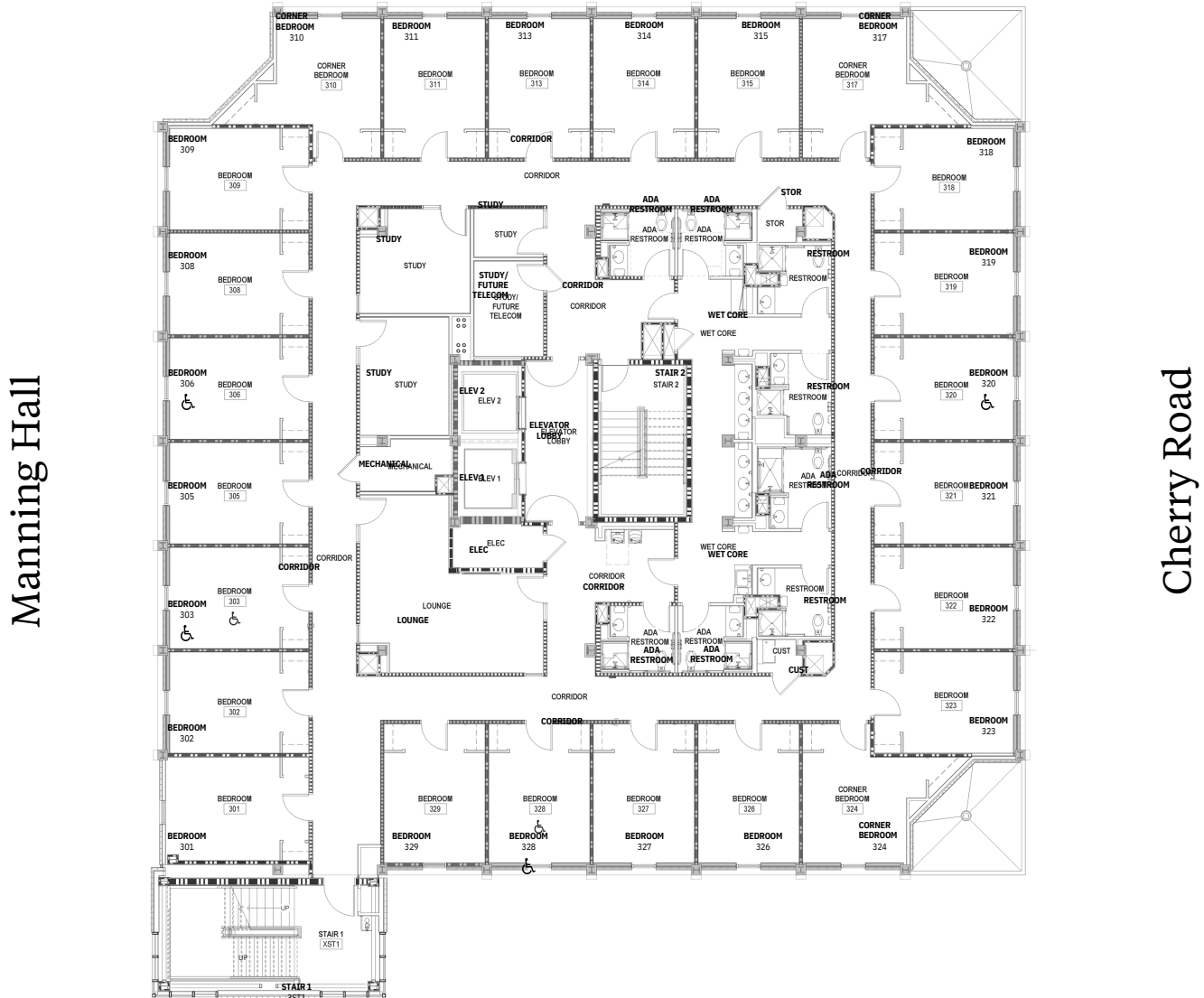
Hendrix Student Center

Room numbers identify the floor and room. The first two numbers is the floor, the next two numbers is the room, and the 1 or 2 identifies a bed in the room. For example, room 0229-2 is room 29 on the second floor.

# Byrnes Floorplan

Floor 3

Bryan Mall Circle



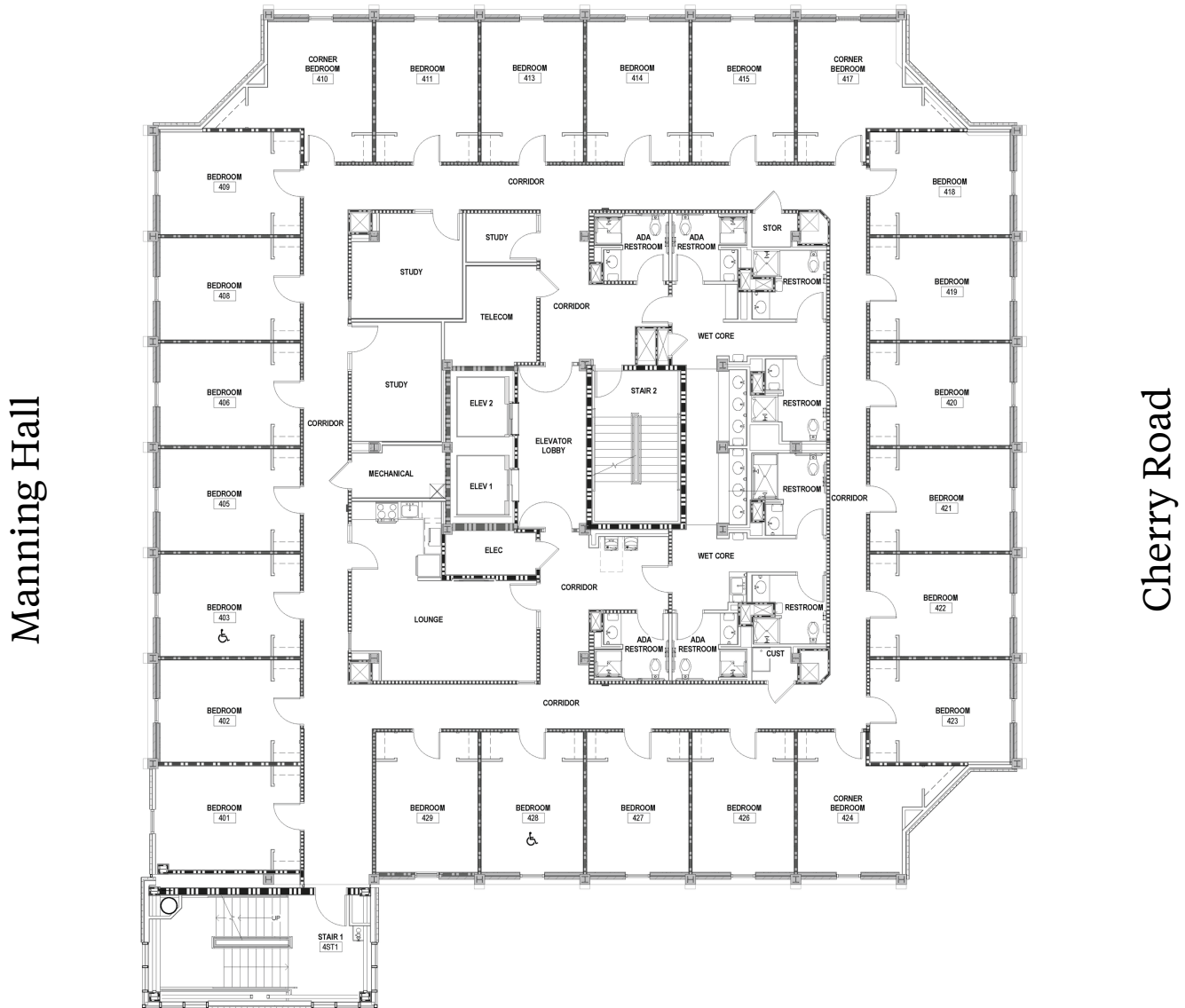
Hendrix Student Center

Room numbers identify the floor and room. The first two numbers is the floor, the next two numbers is the room, and the 1 or 2 identifies a bed in the room. For example, room 0229-2 is room 29 on the second floor.

# Byrnes Floorplan

Floor 4

Bryan Mall Circle



Hendrix Student Center

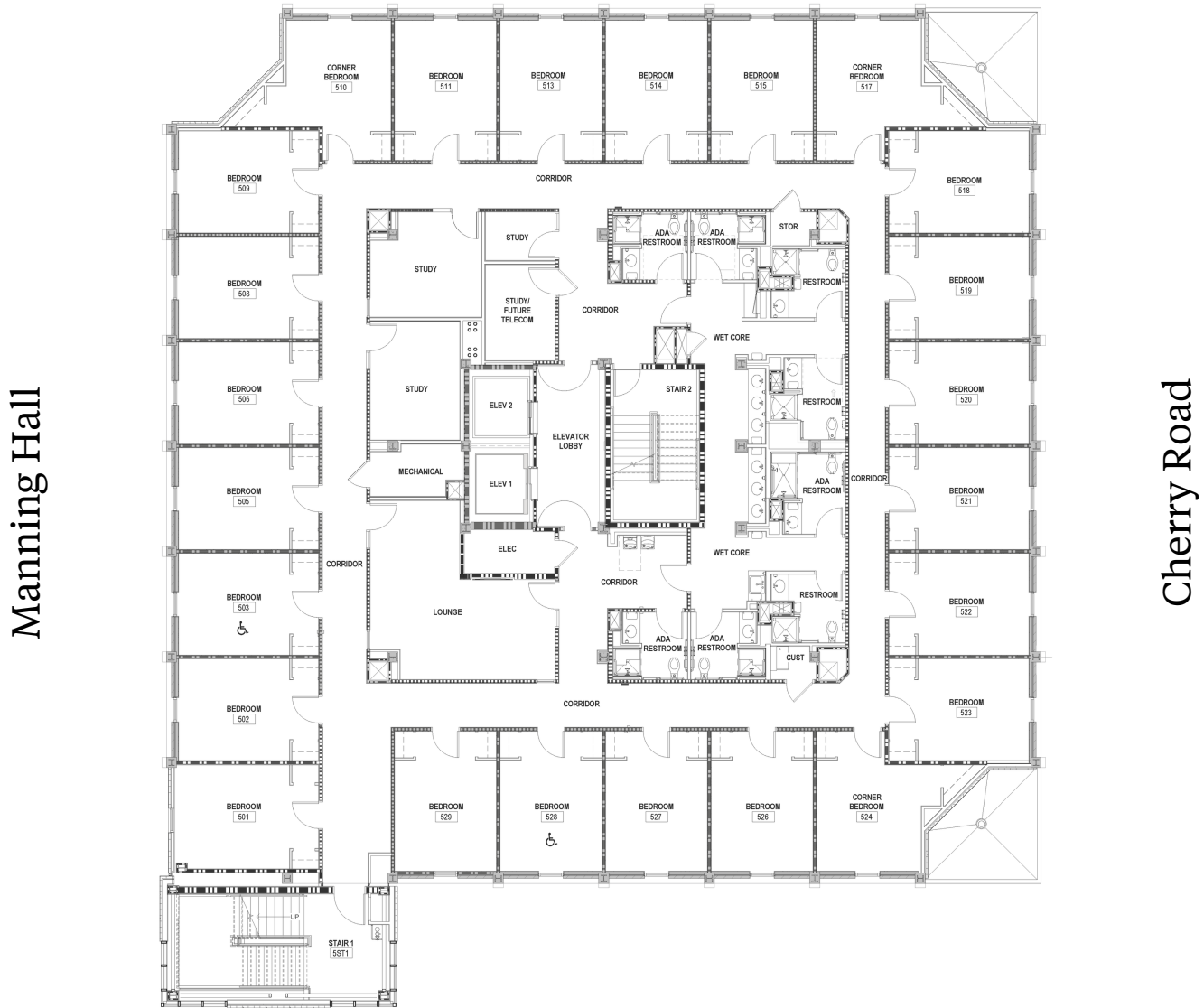
Room numbers identify the floor and room. The first two numbers is the floor, the next two numbers is the room, and the 1 or 2 identifies a bed in the room. For example, room 0229-2 is room 29 on the second floor.



# Byrnes Floorplan

Floor 5

Bryan Mall Circle



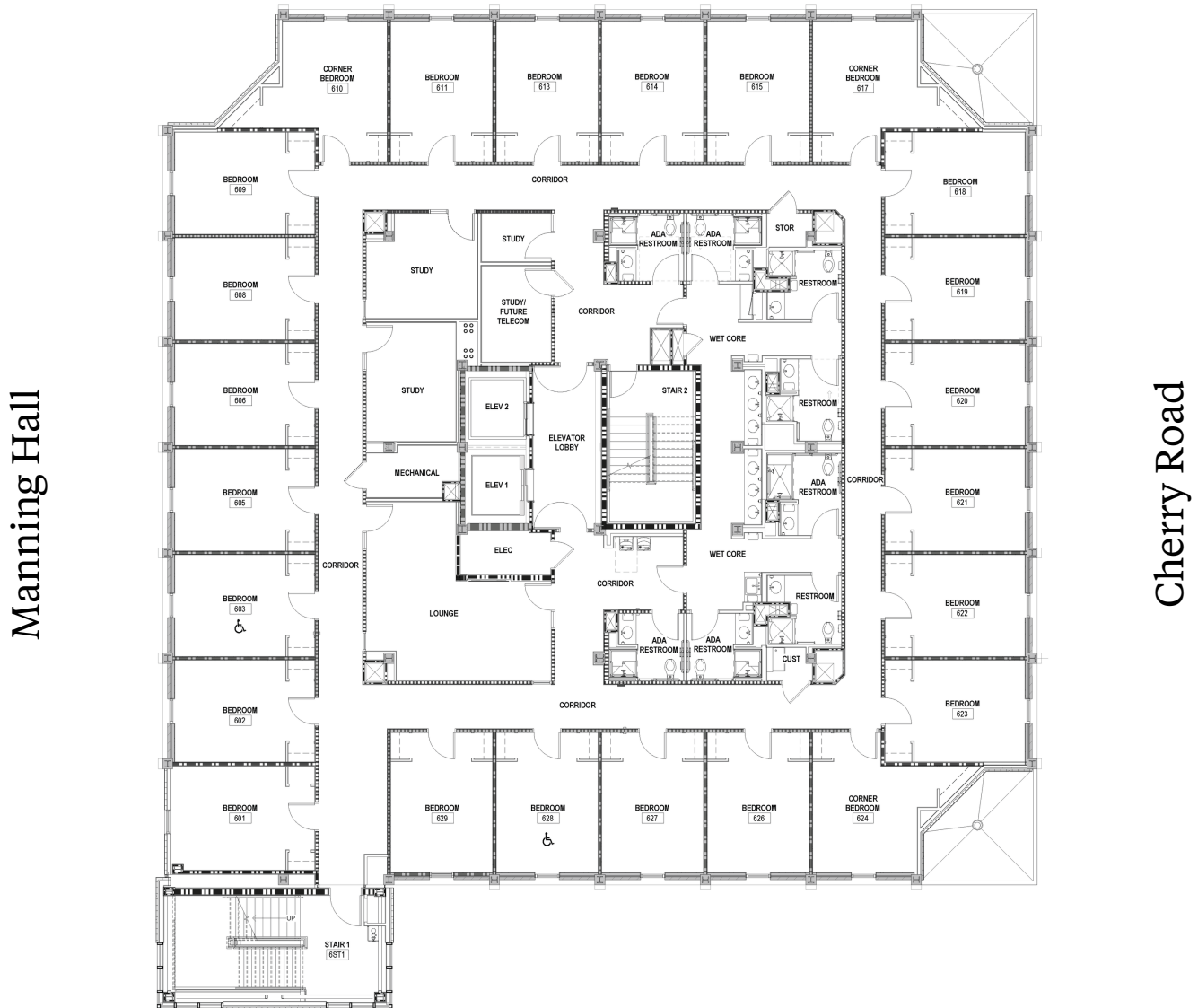
Hendrix Student Center

Room numbers identify the floor and room. The first two numbers is the floor, the next two numbers is the room, and the 1 or 2 identifies a bed in the room. For example, room 0229-2 is room 29 on the second floor.

# Byrnes Floorplan

Floor 6

Bryan Mall Circle



Hendrix Student Center

Room numbers identify the floor and room. The first two numbers is the floor, the next two numbers is the room, and the 1 or 2 identifies a bed in the room. For example, room 0229-2 is room 29 on the second floor.

# Byrnes Floorplan

Floor 7

Bryan Mall Circle



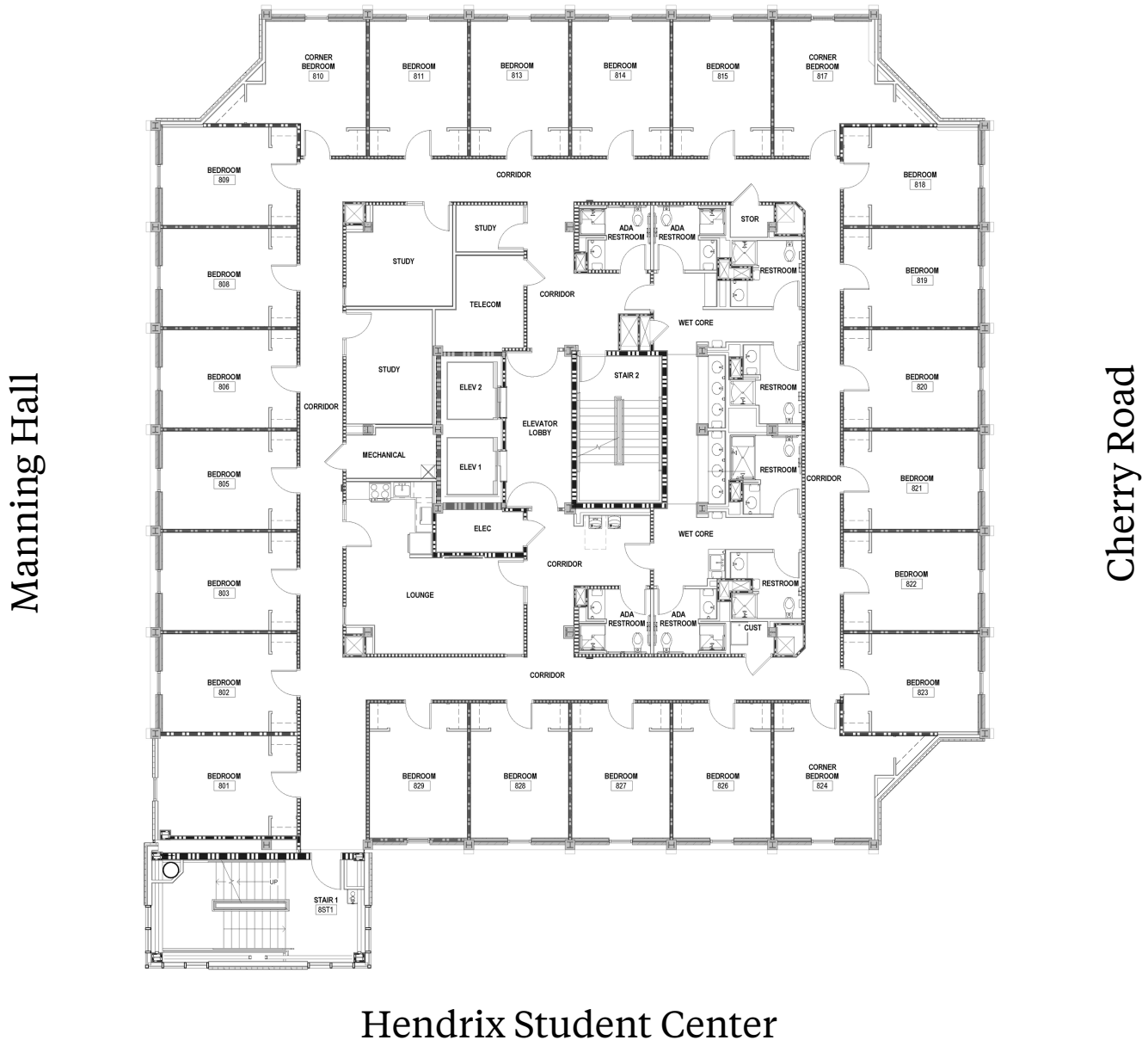
Hendrix Student Center

Room numbers identify the floor and room. The first two numbers is the floor, the next two numbers is the room, and the 1 or 2 identifies a bed in the room. For example, room 0229-2 is room 29 on the second floor.

# Byrnes Floorplan

Floor 8

Bryan Mall Circle

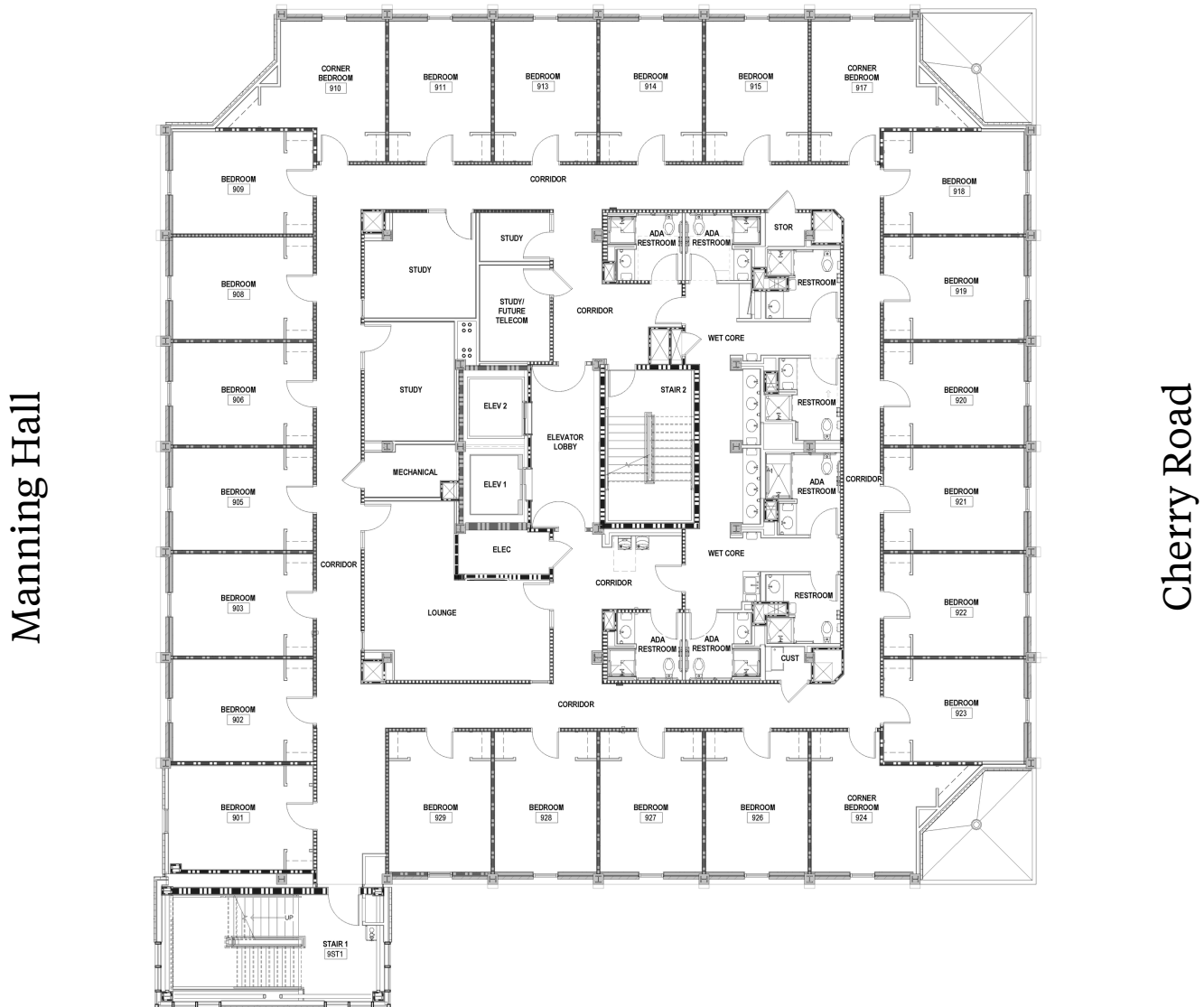


Room numbers identify the floor and room. The first two numbers is the floor, the next two numbers is the room, and the 1 or 2 identifies a bed in the room. For example, room 0229-2 is room 29 on the second floor.

# Byrnes Floorplan

Floor 9

Bryan Mall Circle



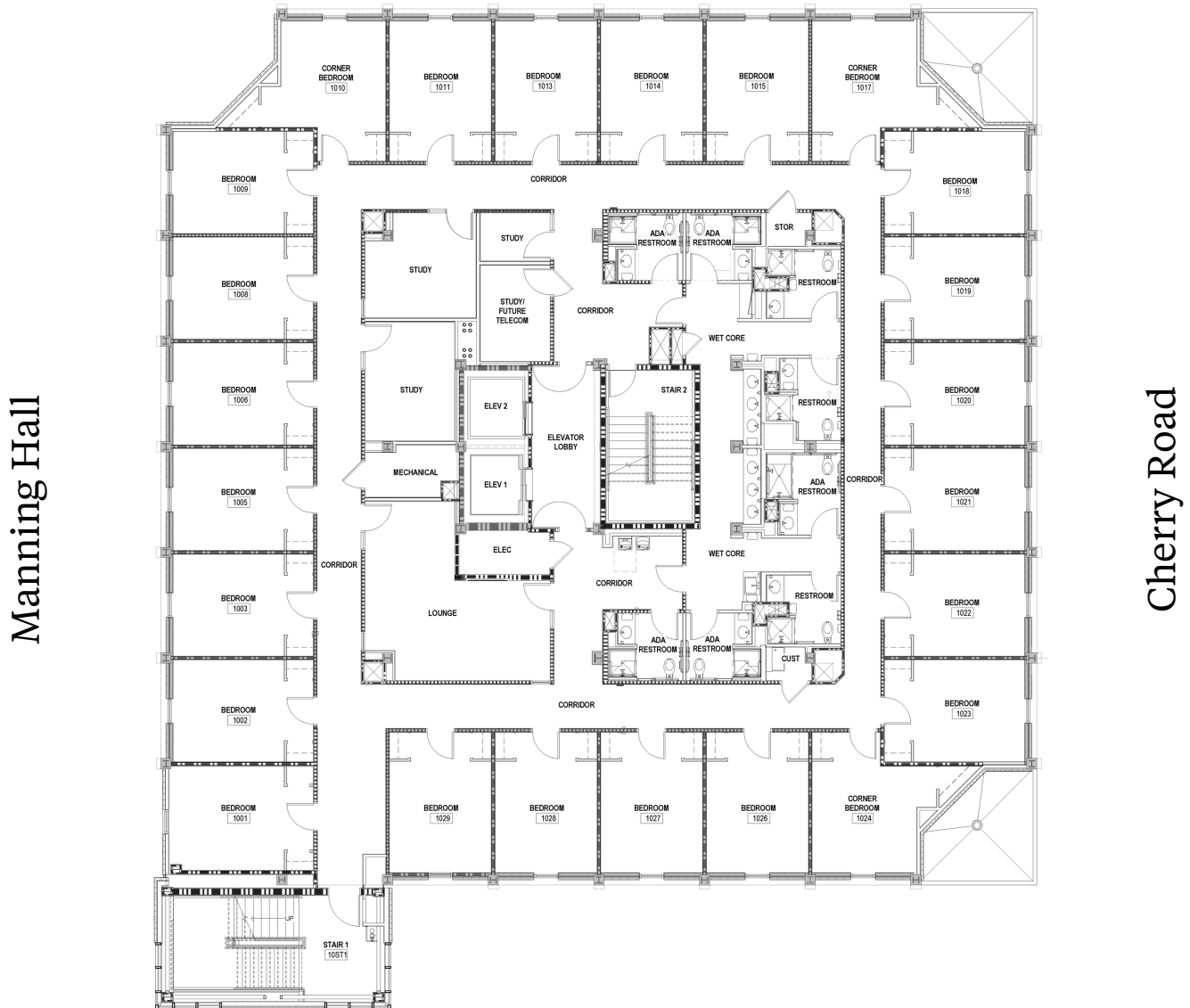
Hendrix Student Center

Room numbers identify the floor and room. The first two numbers is the floor, the next two numbers is the room, and the 1 or 2 identifies a bed in the room. For example, room 0229-2 is room 29 on the second floor.

# Byrnes Floorplan

Floor 10

Bryan Mall Circle



Hendrix Student Center

Room numbers identify the floor and room. The first two numbers is the floor, the next two numbers is the room, and the 1 or 2 identifies a bed in the room. For example, room 0229-2 is room 29 on the second floor.