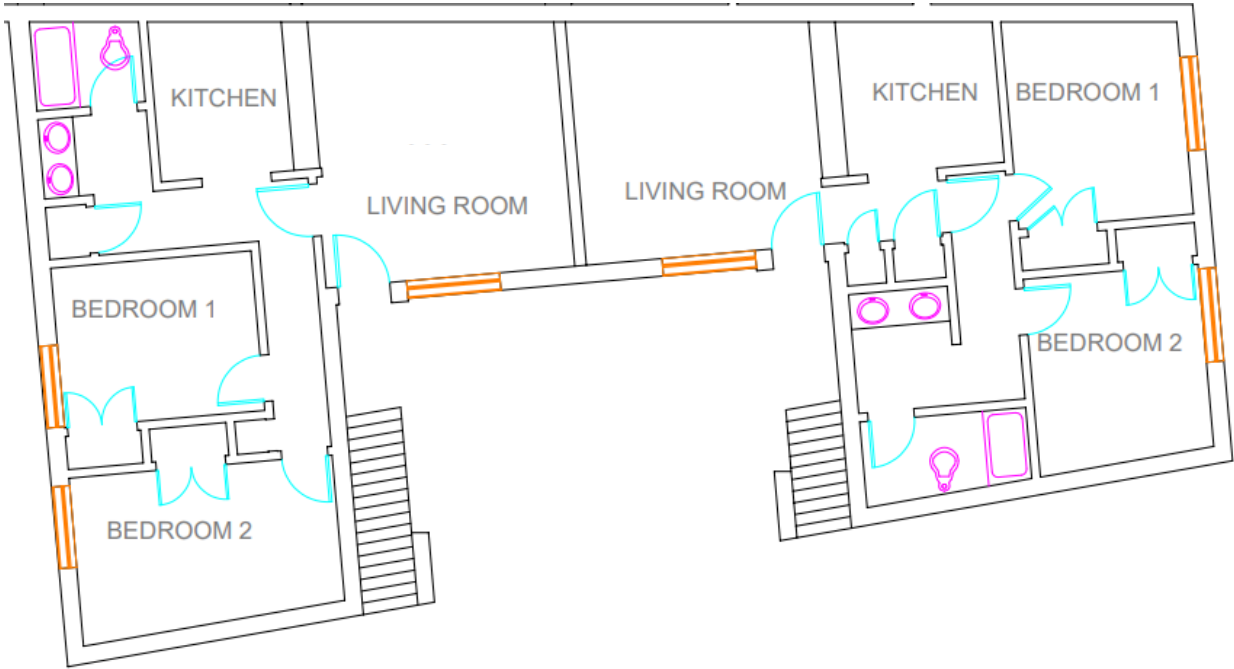
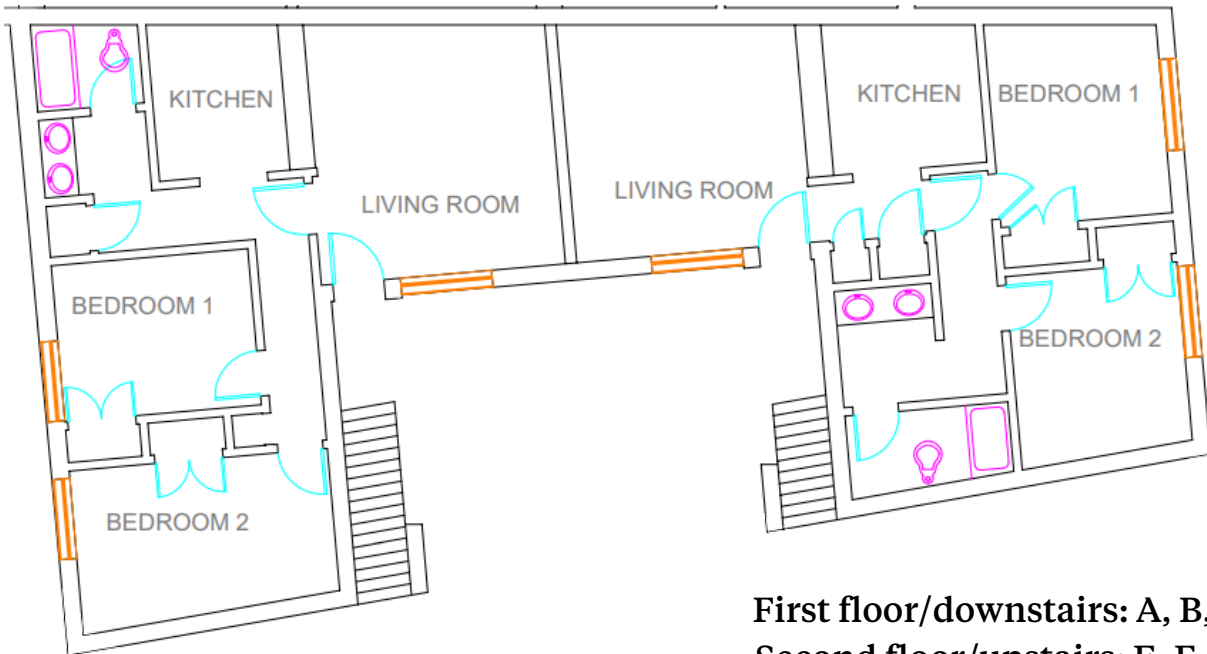


Calhoun Courts Floorplan

Downstairs



Upstairs



First floor/downstairs: A, B, C, D

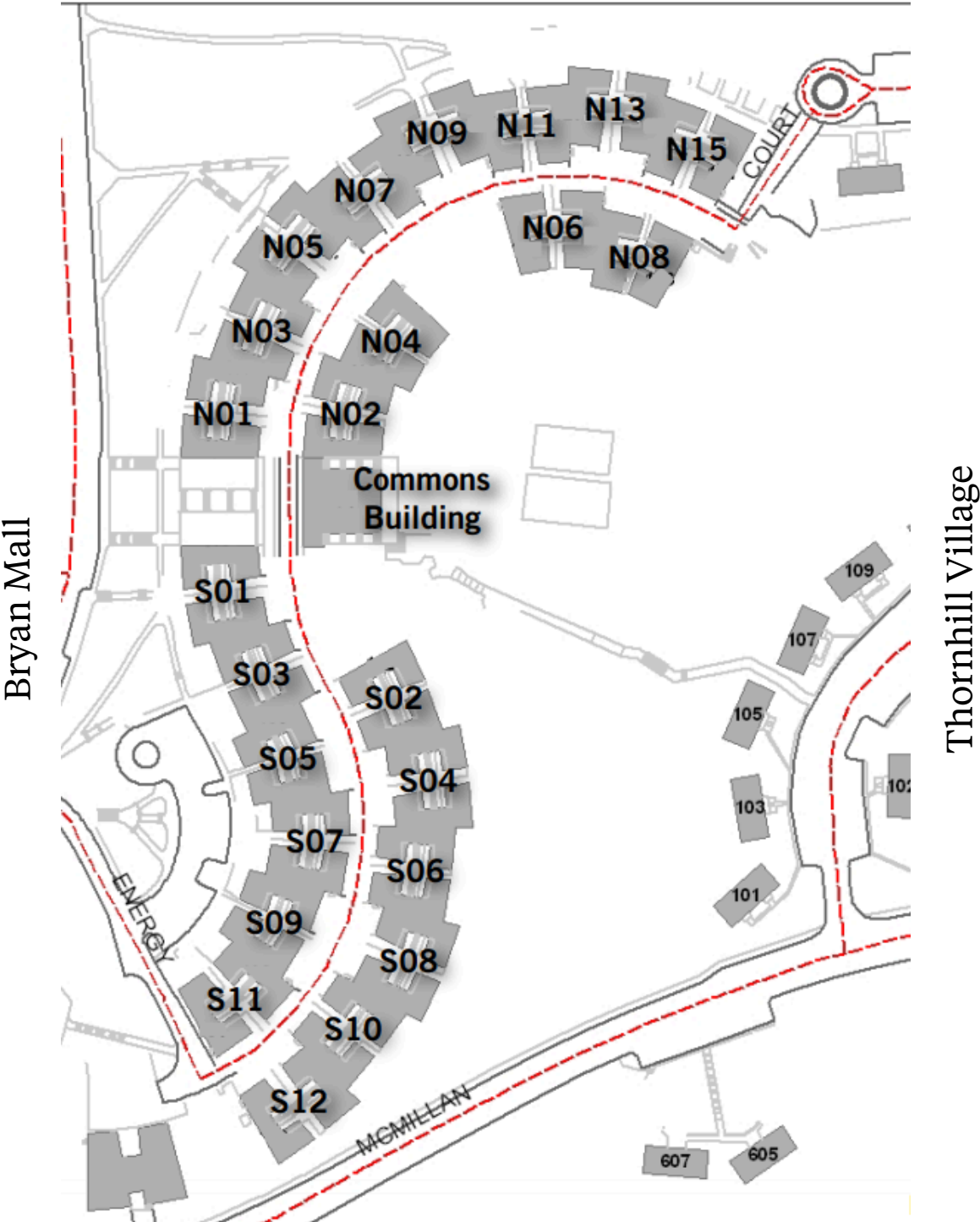
Second floor/upstairs: E, F, G, H

Room numbers identify the building section and apartment. The letter S identifies Calhoun Courts South. The first number is the building section and the letter is the apartment. For example, S13B is Calhoun Courts South, apartment B in building section 13.

Calhoun Courts Floorplan

Community Map

Old Greenville Highway (93)



Calhoun Courts Floorplan



Calhoun Courts Quick Facts

- 2 bedrooms with 2 beds in each (4 beds total)
- Furniture:
 - Bedroom 10' x 16'
 - Four XL Twin Beds: 38"W x 79" inside and 38"W x 81"L outside
 - Four Desks 24" x 42" x 52"
 - Four chest of drawers 18" x 24" x 30"
 - Two closets (one in each bedroom): 26" x 60"
 - Bedroom window 50" x 62"
- Common Area
 - Living room 14' x 15'
 - Living room window 50" x 62" (exact measurements may vary)
 - Includes couch, loveseat, end tables, bar stools, and autolocking door
- Kitchen
 - Includes stove with range top, refrigerator, microwave, and cabinets (cookware and utensils not included)
- Bathroom includes one full bath and a double vanity
- Carpeted bedrooms and luxury vinyl tile in common areas
- Laundry located in Calhoun Commons
- All apartments have AC