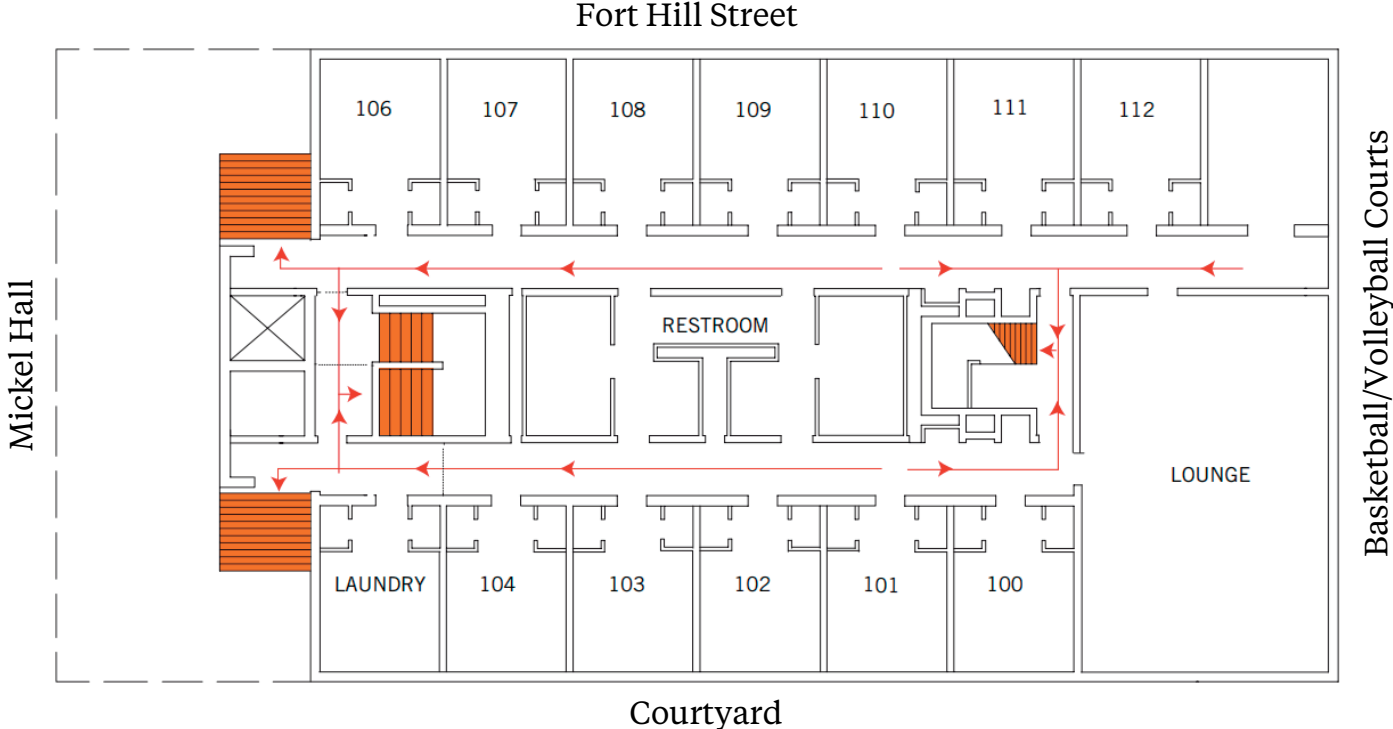
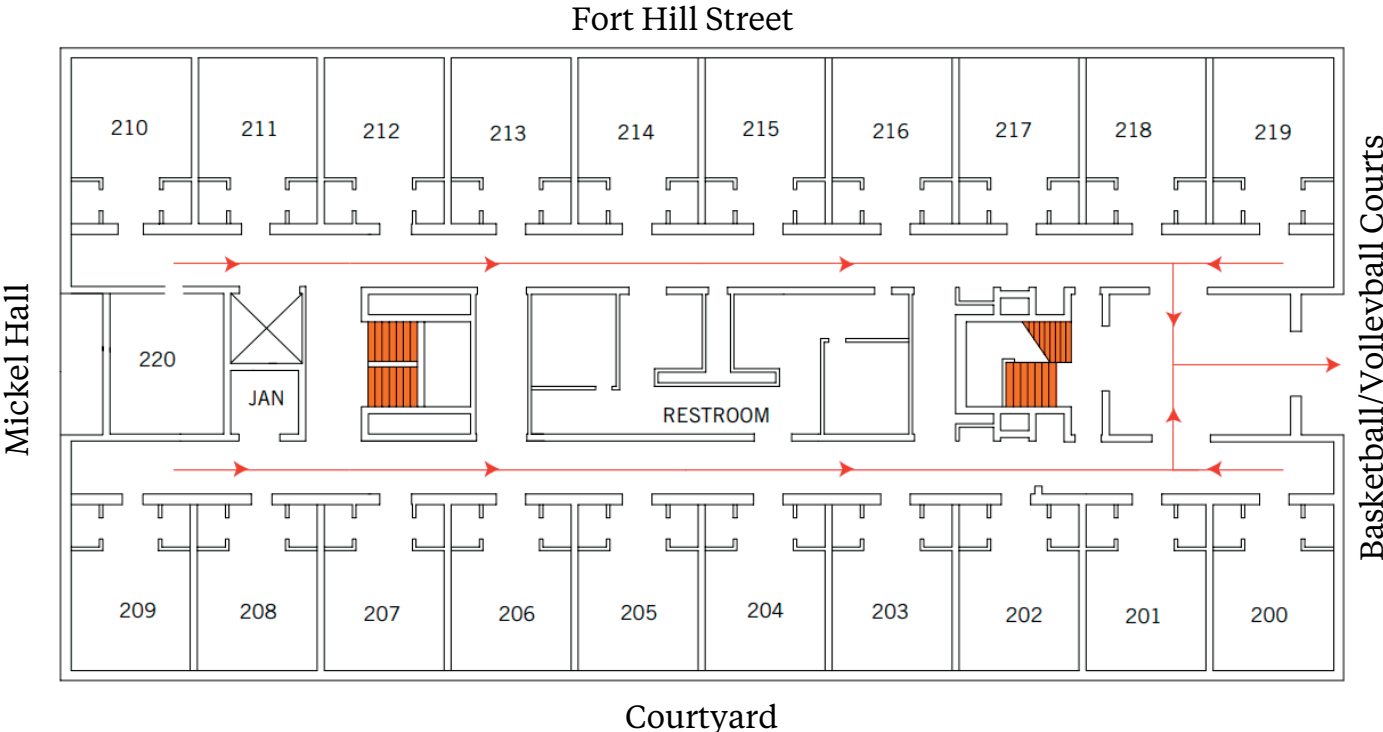


# Geer Floorplan

## First Floor



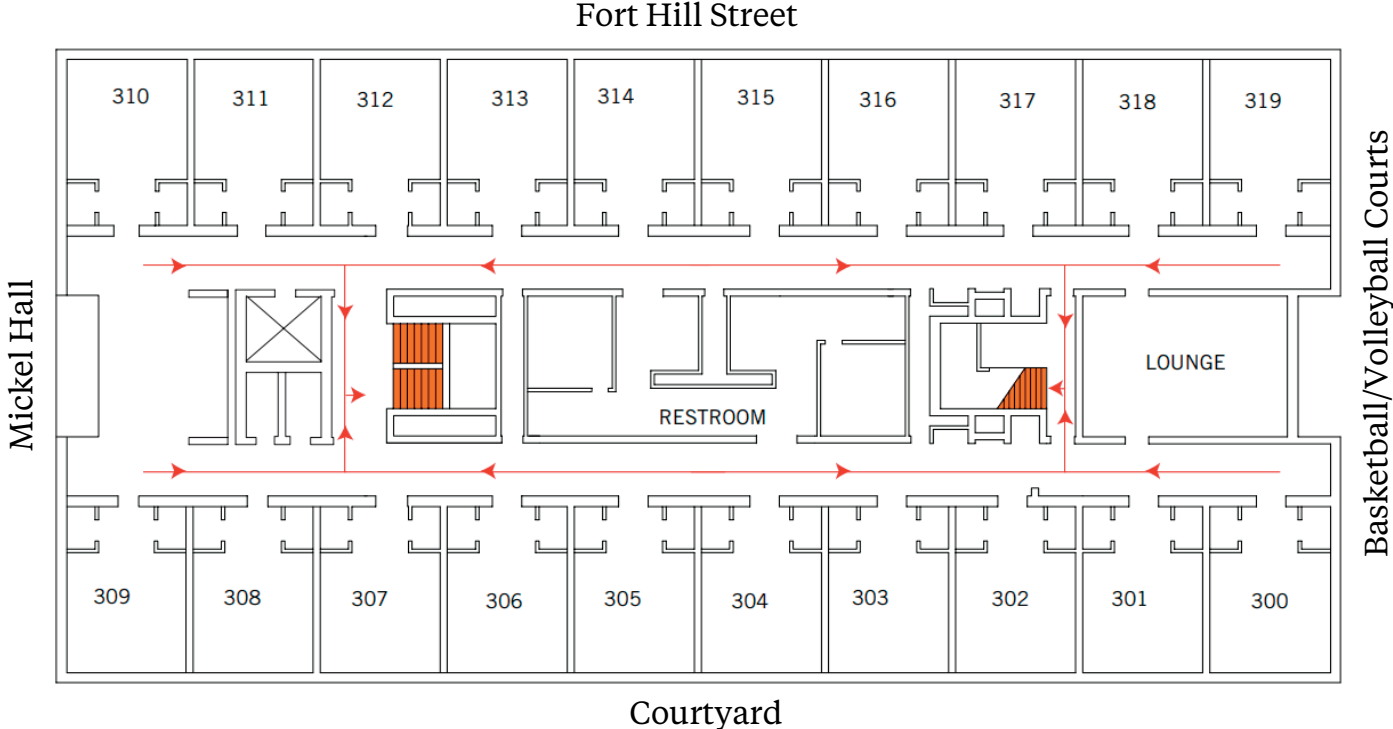
## Second Floor (Entrance Floor)



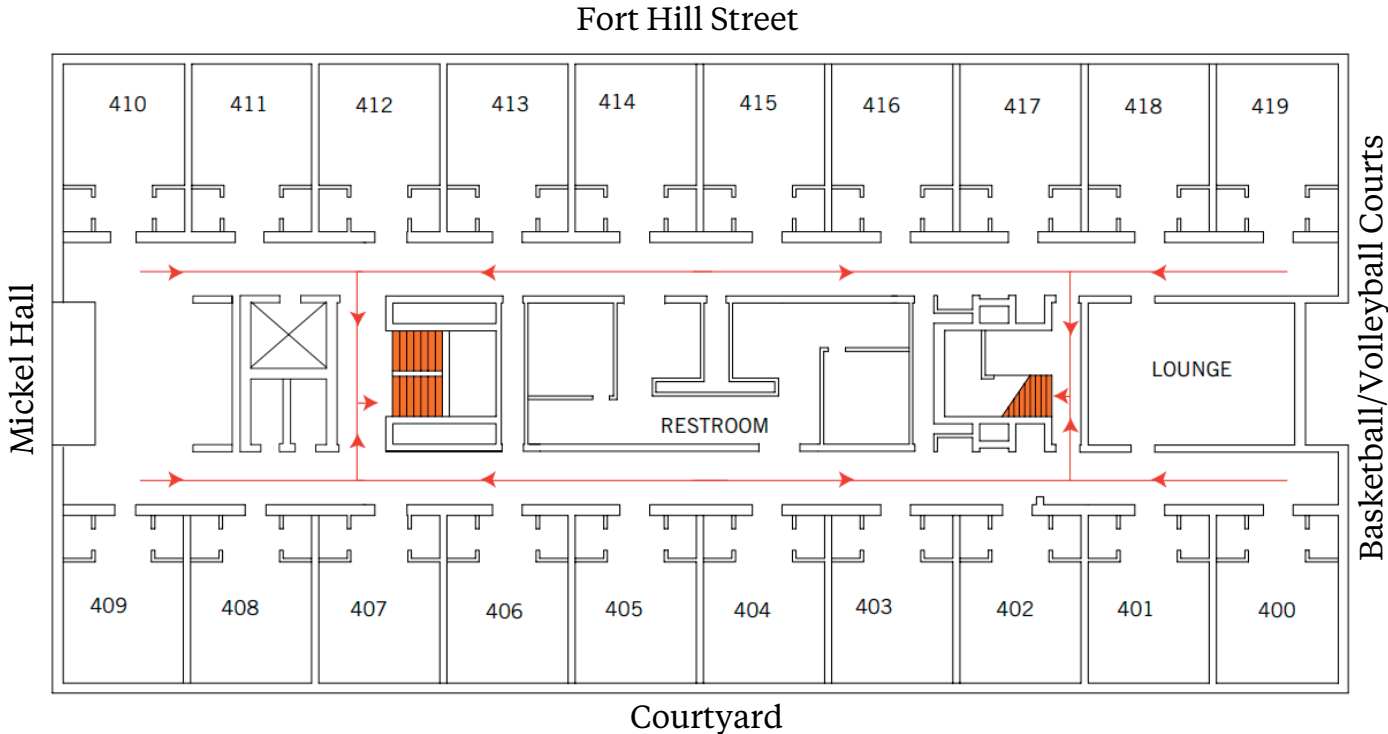
**Room numbers indicate floor level.**  
**Example 202 is on the 2nd floor.**

# Geer Floorplan

## Third Floor

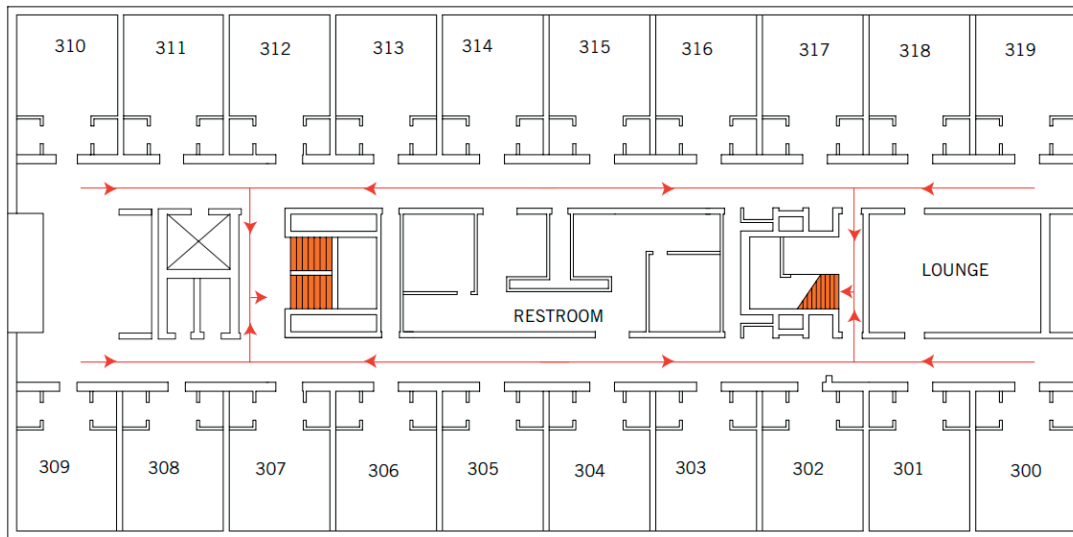


## Fourth Floor



**Room numbers indicate floor level.**  
**Example 404 is on the 4th floor.**

# Geer Floorplan



## Geer Hall Quick Facts

- Room Size: 11' x 16' (including entry and closet space)
- Furniture
  - Two XL twin beds (38" x 79" inside and 38" x 81" outside)
  - Two individual desks (32"W x 24.5"D x 30"H) and chairs
  - Two walk-in closets with rod (30") and 4 shelves (10" tall)
  - One sink (Floor to sink 23")
  - Medicine cabinet and mirror
  - Venetian blinds
  - Window (32" x 74")
- Wall Color: Paperwhite (off-white)
- Tiled floors
- Hall Bathroom
- Laundry: Room 105 (first floor)
- Kitchen: first floor lower level
- All residence halls have AC
- No elevator in building