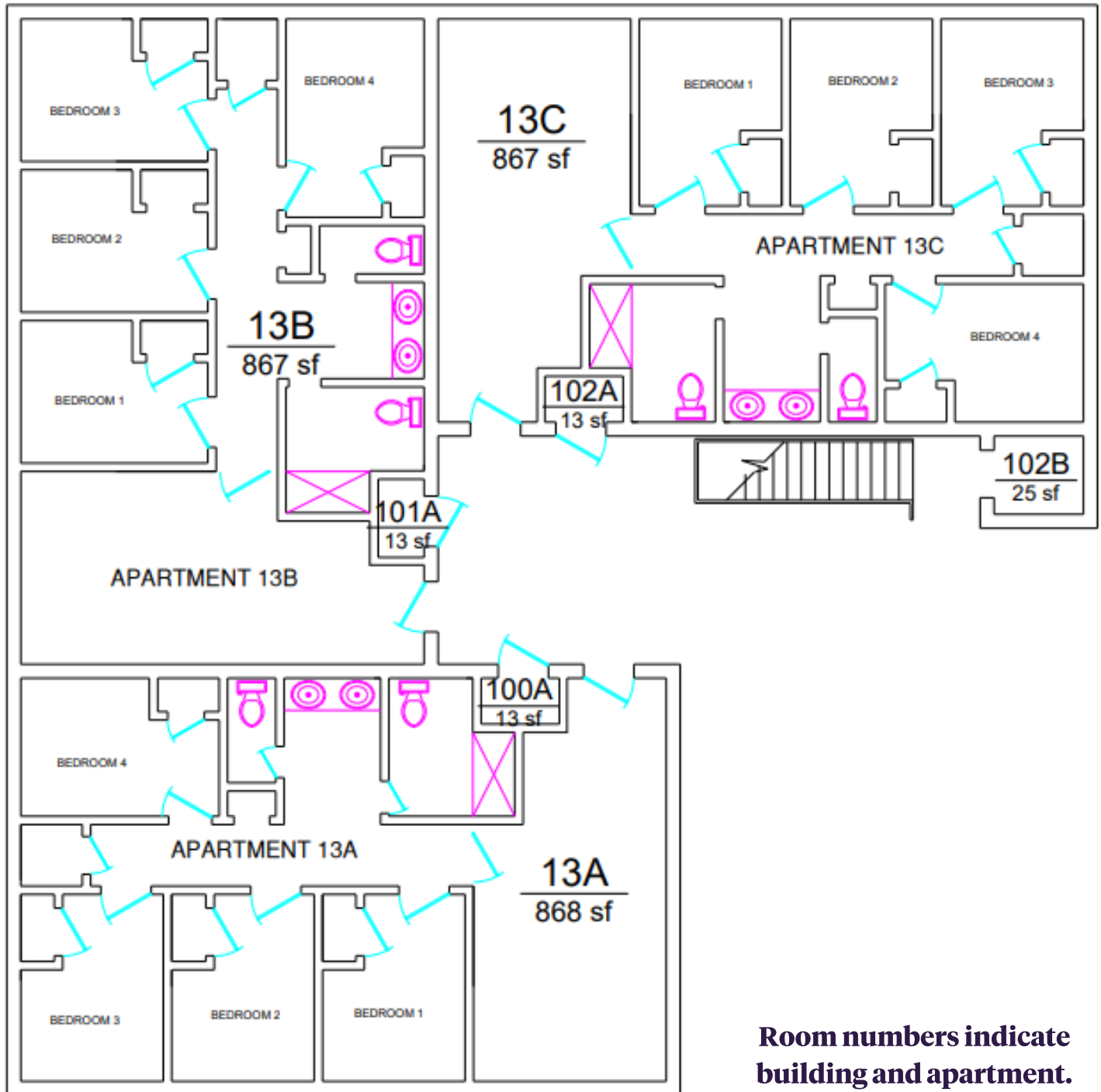


Lightsey Bridge II Floorplan

This plan shows a single floor with 3 apartments.



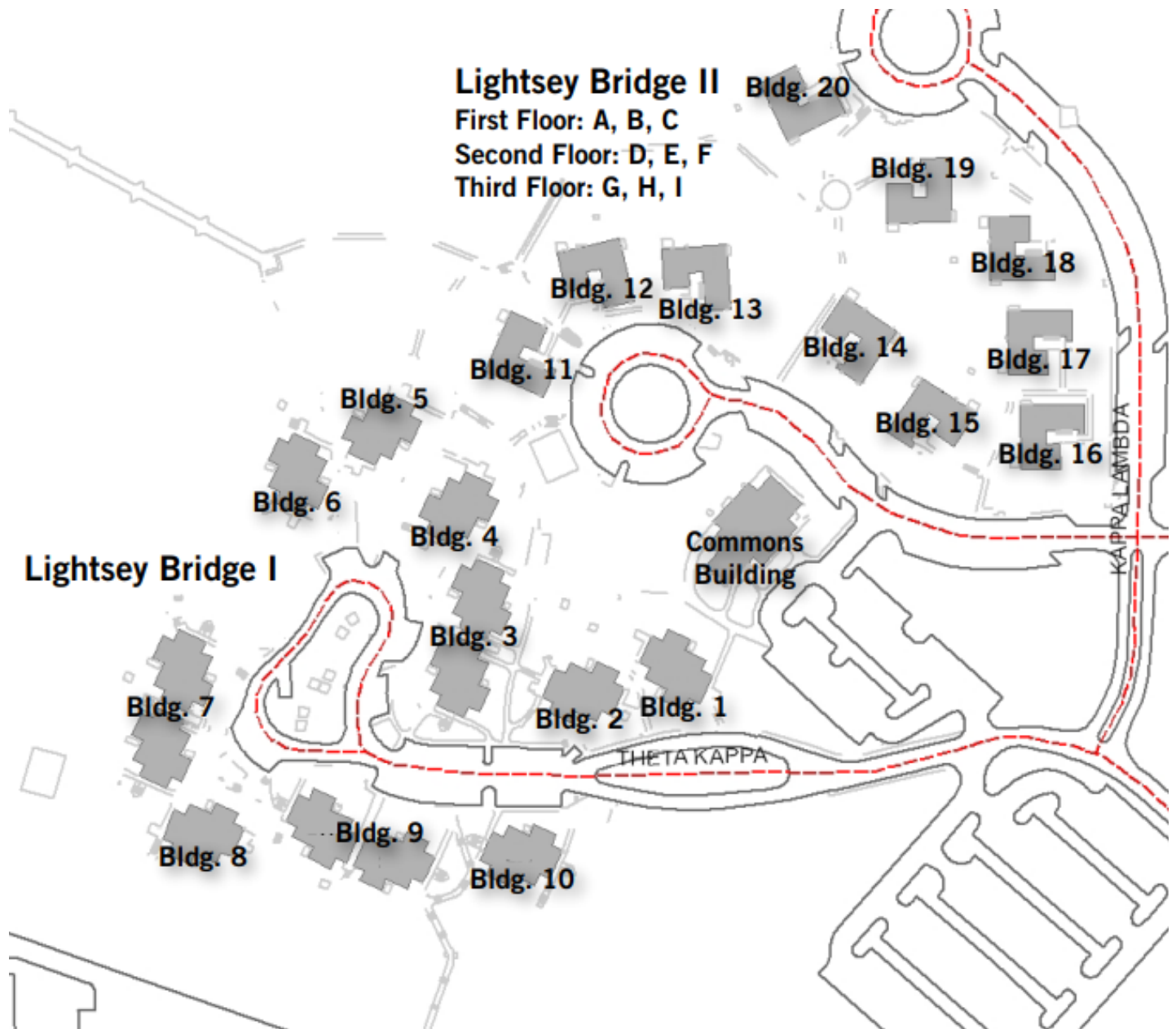
Room numbers indicate building and apartment.

For example, 12A is building 12, apartment A.

Apartments A, B, and C are on the first floor.
Apartments D, E, and F are on the second floor.
Apartments G, H, and I are on the third floor

Lightsey Bridge II Floorplan

Community Layout



Apartments A, B, and C are on the first floor.
Apartments D, E, and F are on the second floor.
Apartments G, H, and I are on the third floor

Lightsey Bridge II Floorplan



Lightsey Bridge II Quick Facts

- 4 Bedrooms in each apartment
 - Room Size: 9' x 12'
 - Furniture in each bedroom
 - XL twin bed (36" x 80")
 - Desk (30"W x 24"D x 30"H) and chair
 - One closet (27" x 45")
 - Chest of drawers (30"W x 24"D x 30"H)
 - Window (30" x 45")
- Common Area
 - Living room: 12' x 12'
 - 2 closets
 - Living room window (45" x 60")
 - Includes sectional couch and coffee table
- Wall Color: Divine White
- Carpeted Bedrooms and Luxury Vinyl Tile in common areas
- Bathroom: One full bath, one half bath, and a double vanity
- Laundry: Located in Commons Building
- Kitchen includes stove with range top, refrigerator, microwave, and two bar chairs (cookware and utensils not included)
- All residence halls have AC
- No elevator in buildings