

Holmes Floorplan

First Floor

Student Union



Holmes Floorplan

Second Floor

Student Union



Holmes Floorplan

Fourth Floor

Student Union



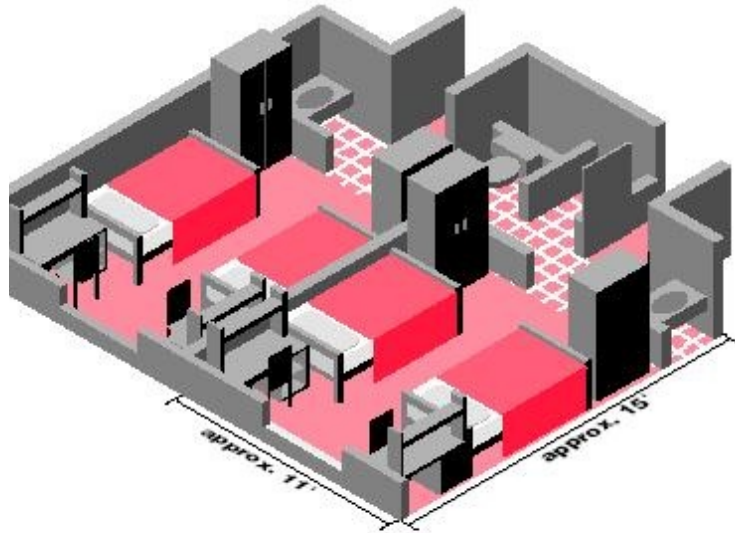
Holmes Floorplan

Fifth Floor

Student Union



Holmes Floorplan



Holmes Hall Quick Facts

- Room Size: First Floor 14' x 10' and Second through Fifth Floor 14' x 12'
- Furniture
 - Two XL twin beds (38" x 80" inside and 38" x 86" outside)
 - Two individual desks (24"W x 42"L x 30"H) and chairs
 - Two Chest of Drawers (18"W x 30"L x 30"H)
 - Two Nightstands (18"W x 20.5"L x 30"H)
 - Two Wardrobes (24"W x 42"L x 74"H)
 - One sink
 - Venetian blinds
 - Two Windows (28" x 68")
- Wall Color: Beige
- Carpeted Floors
- Suite Style Bathroom (one shower and toilet for each suite) and sink in each room
- Laundry: Basement Level
- Kitchens with microwaves and lounges located throughout
- All residence halls have AC
- Elevator from ground to fifth floor