

CALHOUN COURTS - TYPE A

REFERENCE BLDGS:

S11A	N1A
S9A	N3A
S7A	N5A
S5A	N7A
S3A	N9A
S1A	N11A
S12A	N13A
S10A	N15A
S8A	N2A
S6A	N4A
S4A	
S2A	

Construction Type :
 Occupancy Classification :
 Number of Floors : 2
 Sprinklers :

Renovated:
 Architect :
 Engineer :
 Contractor :

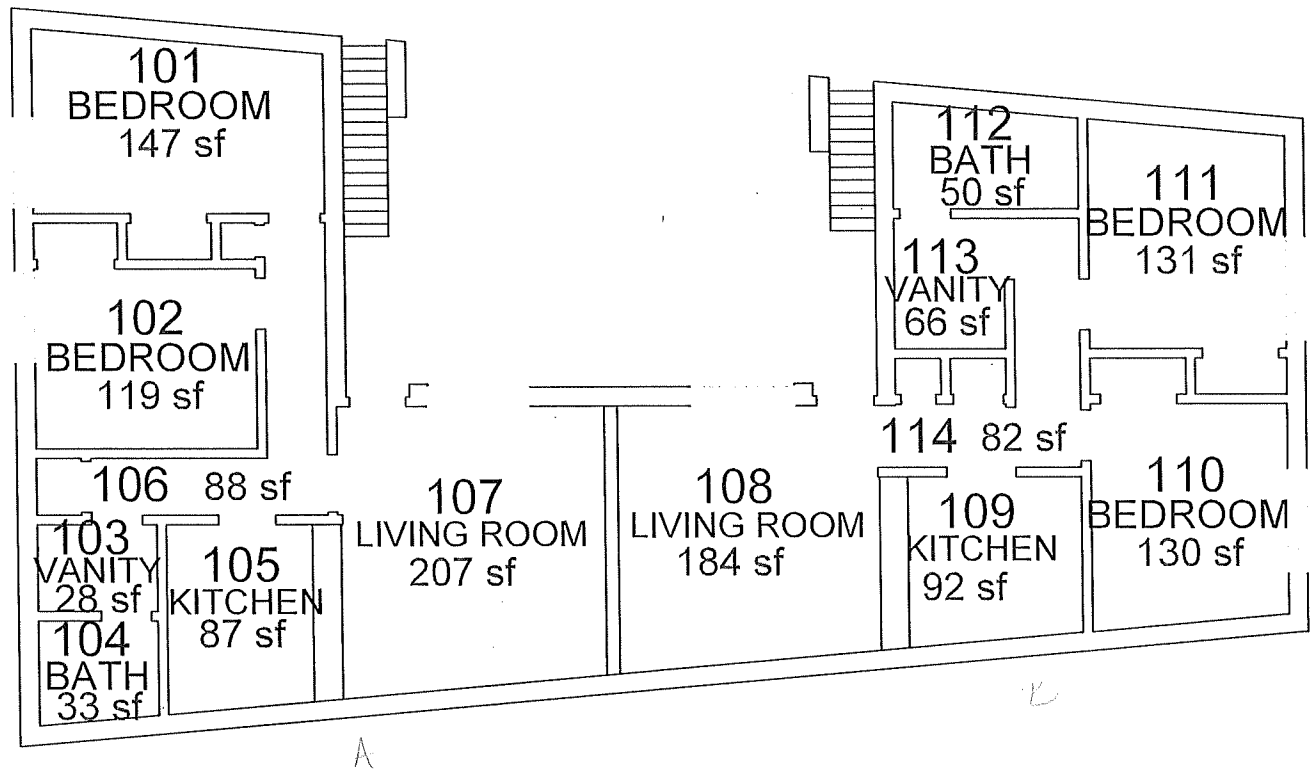
Built : 1980
 Architect : Craig, Gaulden & Davis
 Engineer :
 Contractor :

Renovated:
 Architect :
 Engineer :
 Contractor :

Building: Calhoun Courts Type A - 2017
 Address: 100 thru 131 Court Way
 Gross Square Feet: 3,474 each
 Perimeter: 238 FT.
 Revision Date: 2-11-09
 Scale: 1" = 10'-0"

CLEMSON
 FACILITIES
 CLEMSON UNIVERSITY (864) 656-2186
 KLUGH AVENUE
 CLEMSON, S.C. 29634 - 5906





Building: Calhoun Courts - Type A - 2017
 Floor: First Floor
 Gross Square Feet: 1,737
 Perimeter: 238 ft.
 Revision Date: 2-11-09
 Scale: 1" = 10'-0"

CLEMSON
 FACILITIES
 CLEMSON UNIVERSITY (864) 656-2186
 KLUGH AVENUE
 CLEMSON, S.C. 29634 - 5906

