



HOLDER CONSTRUCTION COMPANY

Superintendent's Weekly Activity Report #174
Douthit Hills Student Community, Clemson University Project
Rush Dunaway





CURRENT CONSTRUCTION ACTIVITIES

WEST ZONE

- Continued Signing Off Punch List Items in the West Zone.
- Continued Signing Off Warranty Items in the West Zone.
- Continued Installing Door Hardware for Card Readers.
- Began Installing Conduit for Office Adds in Building B.

HUB

- Completed Polishing Terrazo on 3rd Floor.
- Completed Mondo Flooring on the 2nd Floor.
- Completed Setting Condensing Units on the Roof.
- Continued Ductwork Installation on 2nd Floor.
- Continued MEP In-wall Rough-in on 2nd Floor.
- Continued Hanging and Finishing Drywall on 2nd/3rd Floors.
- Continued Installing Countertops at "International."
- Continued Installing Doors on 2nd Floor.
- Began Installing Speakers on the 3rd Floor.

SITE

- Completed Pouring Sidewalks East of the Hub.
- Completed Brick Installation on Seat Walls at the Hub.
- Continued Working on Civil and Landscape Punch Items.
- Continued Working on SWPP Inspection Items.
- Continued Installing Signs Throughout the Site.
- Began Planting Shrubs and Trees East of the Hub.
- Began Saw-cutting/Washing Sidewalks East of the Hub.



Hub 3rd Floor Main Kitchen



Completing Sitework East of the Hub



NEXT WEEK'S ACTIVITIES

WEST ZONE

- Continue Signing Off Punch List Items in the West Zone.
- Continue Signing off Warranty Items in the West Zone.
- Begin Installing Raceway for Fire Alarm Adds.
- Begin Pulling Cable for Office Adds in Building B.
- Begin Layout/Framing Walls for Office Adds in Building B.

HUB

- Complete Countertop Installation at "International."
- Complete Ductwork Installation on 2nd Floor.
- Complete MEP In-wall Rough-in on 2nd Floor.
- Continue Hanging and Finishing Drywall on 2nd/3rd Floors.
- Continue Installing Doors on the 2nd Floor.
- Begin Light Fixture Installation in the Atrium.

SITE

- Complete Placing Wood Slats on Seat Walls East of the Hub.
- Complete Pressure Washing Sidewalks East of the Hub.
- Continue Working on Civil and Landscape Punch Items.
- Continue Installing Signs Throughout the Site.
- Continue Working on SWPP Report Items.
- Begin Caulking Sidewalks Around the Hub.



Smokehouse Tile and Countertops



Pizza/Garden Tile and Countertops



WEATHER

CURRENT WEEK

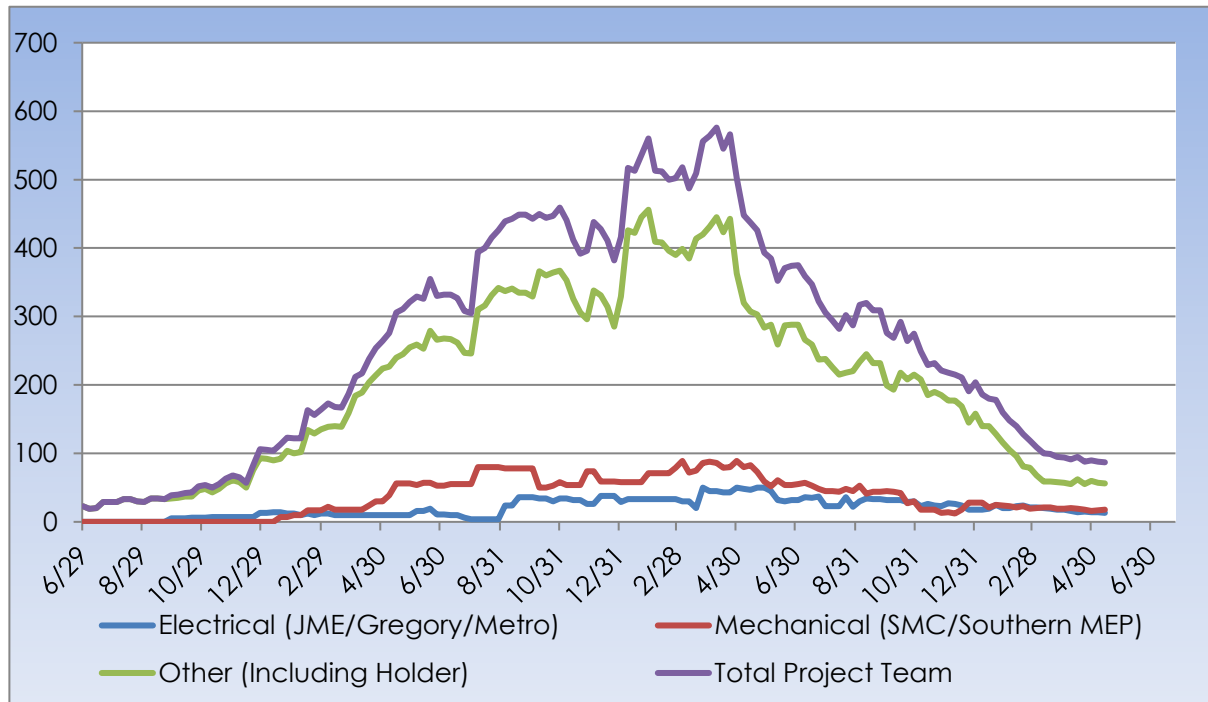
4	Clear	5	Clear	6	Clear	7	Clear	8	Clear
Actual: 82° 66°	0.00 in	Actual: 81° 63°	0.00 in	Actual: 88° 62°	0.00 in	Actual: 87° 66°	0.00 in	Forecast: 88° 68°	0.0 in
Average: 84° 61°	0.17 in	Average: 82° 62°	0.08 in	Average: 84° 60°	0.07 in	Average: 84° 61°	0.07 in	Average: 84° 61°	0.25 in

Rain Days This Week = 0 Rain Days to Date = 101



MANPOWER

TOTAL PROJECT LABOR





MANPOWER

TOTAL PROJECT LABOR

TRADE CONTRACTORS ON-SITE		
Subcontractor	Trade	Number of Employees
Holder Construction Company	General Contractor	11
Accessories Unlimited	Accessories	1
Brightview Landscape Development	Hardscape & Landscape	8
Cabinets By Design	Millwork	0
Carolina Fire Protection	Sprinklers	3
Elite Flooring	Tile	4
Feltman Brothers	Masonry - West	0
First Choice Glass	Glazing	0
Gainesville Mechanical	Mechanical	0
Gill Plumbing	Plumbing	0
Gregory Electric	Electrical – HUB	5
Johnson Controls	Controls	2
Johnsons Modern Electric	Electrical	1
King Asphalt	Asphalt	0
Kone	Elevators	0
Labor Finders	Labor Force	6
Metro Power	Hub/Sitework Electrical	6
Nations Roofing	Roofing	0
Precision	Concrete	5
Professional Door	Doors & Hardware	1
Pyramid Masonry	Masonry - HUB	0
Reeves Young	Site Grading & Utilities	3
Sears Contract	Drywall/Metal Trusses	0
Sentinel Maintenance	Construction Cleaning	0
Simplex	Controls	2
Southern Mechanical Inc.	Mechanical/Plumbing	12
Southern MEP	Mechanical/Plumbing	6
Specialty Finishes	Painting	0
Spectrum Interiors	Drywall - HUB	12
TOTAL		86



SAFETY REPORT

- Total Man Hours Worked This Week: 4,080
- Total Man Hours on Project: 1,892,114
- Crafts On Project This Week: 17



INSPECTIONS/TESTING REPORT

- Hub 3rd Floor Dish Room Ceiling Cover-up Inspection
- DHEC Pre-inspection for 3rd Floor TCO
- Office of State Engineers Pre-inspection for 3rd Floor TCO



ENVIRONMENTAL REPORT

- Pursuing LEED Silver Certification
- Waste Diverted = 27,690 CY