



HOLDER CONSTRUCTION COMPANY

Superintendent's Weekly Activity Report #176
Douthit Hills Student Community, Clemson University Project
Andrew Stein





CURRENT CONSTRUCTION ACTIVITIES

WEST ZONE

- Continued Signing Off Punch List Items in the West Zone.
- Continued Signing Off Warranty Items in the West Zone.
- Continued Installing Door Hardware for Card Readers.

HUB

- Completed Installing Wood Ceiling on 3rd Floor.
- Continued Ductwork Installation on 2nd Floor.
- Continued Installing Light Fixtures on 2nd/3rd Floors.
- Continued Hanging and Finishing Drywall on 2nd/3rd Floors.
- Continued Installing Speakers on the 3rd Floor.
- Continued Installing Kitchen Equipment on 3rd Floor.

SITE

- Continued Working on Civil and Landscape Punch Items.
- Continued Working on SWPP Inspection Items.
- Continued Installing Signs Throughout the Site.
- Began Installing New Pedestrian Poles at 93/Cherry.



Hub Smokehouse Front Counter Tile



Hub 2nd Floor Cloud Ceilings



NEXT WEEK'S ACTIVITIES

WEST ZONE

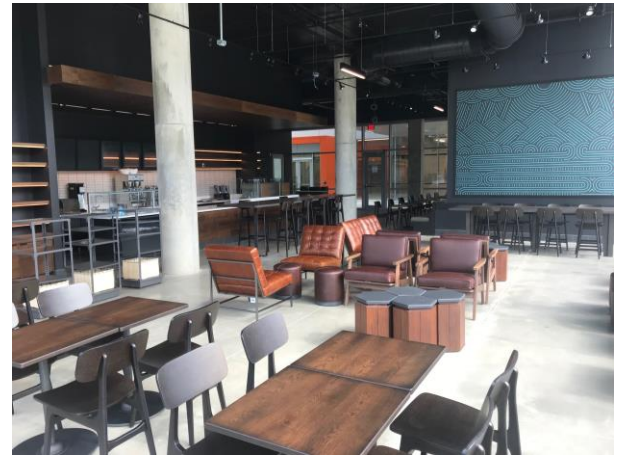
- Continue Signing Off Punch List Items in the West Zone.
- Continue Signing off Warranty Items in the West Zone.

HUB

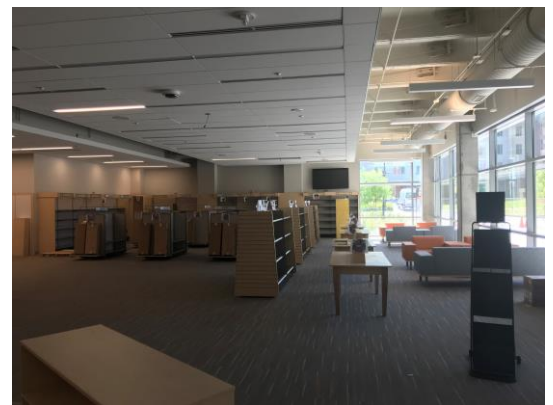
- Continue Light Fixture Installation on 2nd Floor.
- Continue Ceiling Installation on 2nd Floor.
- Continue Hanging and Finishing Drywall on 2nd Floor.
- Begin Light Fixture Installation in the Atrium.
- Complete Installation of Bathroom Sinks on 3rd Floor.
- Begin Installing Millwork Soffit at Smokehouse and Pizza/Garden.

SITE

- Complete Installing Signs Throughout the Site.
- Continue Working on Civil and Landscape Punch Items.
- Continue Working on SWPP Report Items.
- Begin Thermo Crosswalks/Stop Bars at 93/Cherry.



Starbucks Setup for Owner Event



Barnes and Noble Starting to Move In



WEATHER

CURRENT WEEK

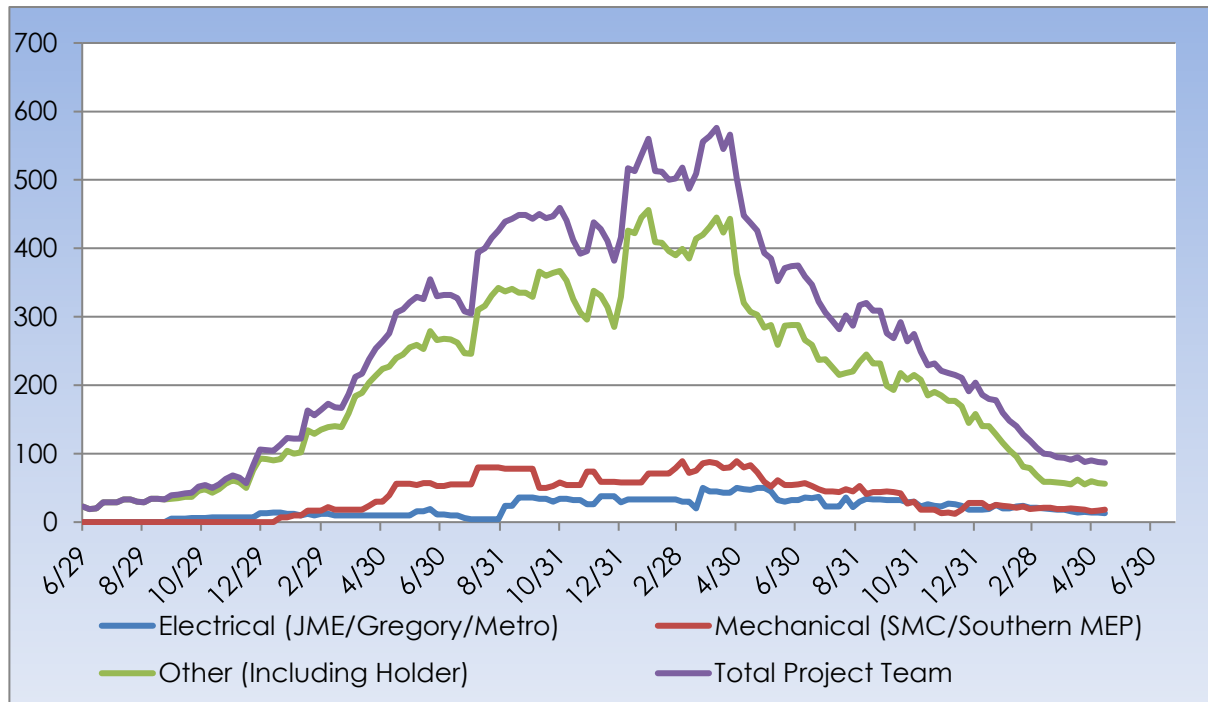
18 Clear Actual: 91° 71° 0.00 in Average: 86° 65° 0.03 in	19 Clear Actual: 93° 73° 0.00 in Average: 86° 65° 0.13 in	20 Scattered Clouds Actual: 93° 73° 0.00 in Average: 86° 64° 0.25 in	21 Tstorm Actual: 90° 73° 0.07 in Average: 87° 65° 0.14 in	22 Scattered Clouds Forecast: 89° 69° 0.12 in Average: 87° 64° 0.07 in
--	--	---	---	---

Rain Days This Week = 0 Rain Days to Date = 101



MANPOWER

TOTAL PROJECT LABOR





MANPOWER

TOTAL PROJECT LABOR

TRADE CONTRACTORS ON-SITE		
Subcontractor	Trade	Number of Employees
Holder Construction Company	General Contractor	11
Accessories Unlimited	Accessories	3
A&D Painting	Painting	4
Brightview Landscape Development	Hardscape & Landscape	0
Cabinets By Design	Millwork	0
Carolina Fire Protection	Sprinklers	3
Elite Flooring	Tile	4
Feltman Brothers	Masonry - West	0
First Choice Glass	Glazing	0
Gainesville Mechanical	Mechanical	0
Gill Plumbing	Plumbing	2
Gregory Electric	Electrical – HUB	3
Johnson Controls	Controls	2
Johnsons Modern Electric	Electrical	1
King Asphalt	Asphalt	0
Kone	Elevators	0
Labor Finders	Labor Force	7
Metro Power	Hub/Sitework Electrical	9
Nations Roofing	Roofing	0
Precision	Concrete	0
Professional Door	Doors & Hardware	1
Pyramid Masonry	Masonry - HUB	0
Reeves Young	Site Grading & Utilities	0
Sears Contract	Drywall/Metal Trusses	0
Sentinel Maintenance	Construction Cleaning	0
Simplex	Controls	3
Southern Mechanical Inc.	Mechanical/Plumbing	6
Southern MEP	Mechanical/Plumbing	6
Specialty Finishes	Painting	0
Spectrum Interiors	Drywall - HUB	12
TOTAL		77



SAFETY REPORT

- Total Man Hours Worked This Week: 4,096
- Total Man Hours on Project: 1,900,466
- Crafts On Project This Week: 16



INSPECTIONS/TESTING REPORT

- Ceiling Cover-up Inspection on Hub 2nd Floor
- Final Inspections on Hub 3rd Floor.
- Ceiling Cover-up Inspection on Hub 3rd Floor.
- Factory Start-up Inspection for Hub 3rd Floor Vent Hoods.



ENVIRONMENTAL REPORT

- Pursuing LEED Silver Certification
- Waste Diverted = 28,090 CY