



HOLDER CONSTRUCTION COMPANY

Superintendent's Weekly Activity Report #173
Douthit Hills Student Community, Clemson University Project
Rush Dunaway





CURRENT CONSTRUCTION ACTIVITIES

WEST ZONE

- Completed Installing Wireless Access Points in the West Zone.
- Completed Installing Card Readers in the West Zone.
- Completed Programming Unit Door Card Readers in C/D.
- Continued Installing Raceway for CCIT Cameras.
- Continued Pulling Cable for Camera's/WiFi Adds.
- Continued Signing Off Punch List Items in the West Zone.
- Continued Signing Off Warranty Items in the West Zone.

HUB

- Completed Thermoplastic Flooring on 3rd Floor.
- Completed Installing Refrigeration Lines on 3rd Floor.
- Continued Ductwork Installation on 2nd Floor.
- Continued MEP In-wall Rough-in on 2nd Floor.
- Continued Hanging and Finishing Drywall on 2nd/3rd Floors.
- Continued Installing Kitchen Equipment at "Pizza Garden."
- Continued Polishing Terrazo on 3rd Floor.
- Continued Installing Door Frames on 2nd Floor.
- Continued Installing Mondo Flooring on 2nd Floor.

SITE

- Completed Milling and Paving at 93 and Cherry Road.
- Completed Traffic Loop Installation at 93 and Cherry Road.
- Completed Site Stabilization at Kite Hill.
- Continued Working on Civil and Landscape Punch Items.
- Continued Working on SWPP Inspection Items.
- Continued Installing Signs Throughout the Site.
- Continued Grading East of the Hub.
- Continued Pouring Sidewalks East of the Hub.



Pizza Garden Kitchen Equipment Installation



Hub 3rd Floor West Beverage Fountain Cabinet Installation



NEXT WEEK'S ACTIVITIES

WEST ZONE

- Continue Signing Off Punch List Items in the West Zone.
- Continue Installing Raceway for WiFi Adds.
- Continue Installing Raceway for Smoke Alarm Adds.
- Continue Pulling/Terminating Cable for CCIT Cameras.
- Continue Signing off Warranty Items in the West Zone.

HUB

- Continue Ductwork Installation on 2nd Floor.
- Continue MEP In-wall Rough-in on 2nd Floor.
- Continue Hanging and Finishing Drywall on 2nd/3rd Floors.
- Continue Polishing Terrazo on 3rd Floor.
- Continue Installing Kitchen Equipment at "Pizza Garden."
- Continue Installing Door Frames on the 2nd Floor.
- Continue Installing Mondo Flooring on the 2nd Floor.
- Begin Setting Condensing Units on the Roof.
- Begin Speaker Installation on the 3rd Floor.

SITE

- Complete Grading East of the Hub.
- Complete Laying Bricks for Seat Walls East of the Hub.
- Complete Pouring Sidewalks East of the Hub.
- Continue Working on Civil and Landscape Punch Items.
- Continue Installing Signs Throughout the Site.
- Continue Working on SWPP Report Items.



Smokehouse Kitchen Equipment Installation



International Kitchen Equipment Installation



WEATHER

CURRENT WEEK

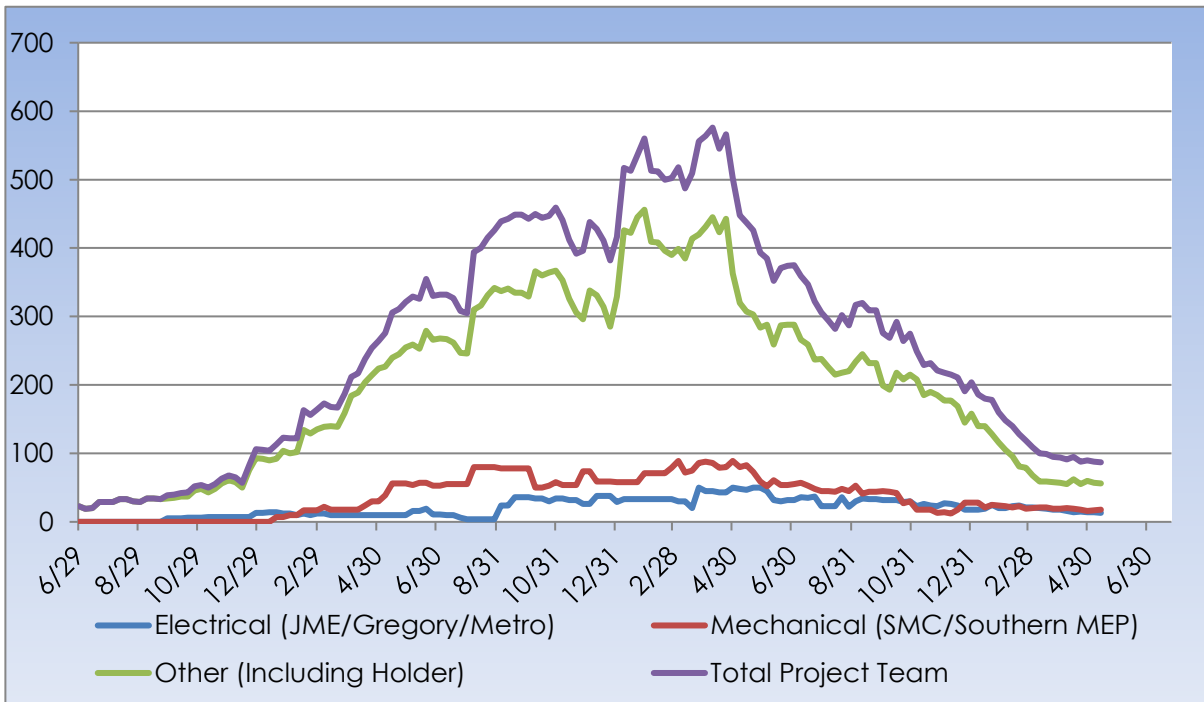
28 Rain Actual: 75° 68° 1.68 in Average: 81° 59° 0.14 in	29 Tstorm Actual: 79° 68° 1.03 in Average: 80° 59° 0.14 in	30 Tstorm Actual: 82° 69° 0.58 in Average: 81° 59° 0.08 in	31 Tstorm Actual: 84° 68° 0.53 in Average: 82° 60° 0.02 in	1 Scattered Clouds Forecast: 89° 67° 0.09 in Average: 84° 60° 0.25 in
---	---	---	---	--

Rain Days This Week = 0 Rain Days to Date = 101



MANPOWER

TOTAL PROJECT LABOR





MANPOWER

TOTAL PROJECT LABOR

TRADE CONTRACTORS ON-SITE		
Subcontractor	Trade	Number of Employees
Holder Construction Company	General Contractor	12
Accessories Unlimited	Accessories	2
Brightview Landscape Development	Hardscape & Landscape	6
Cabinets By Design	Millwork	0
Carolina Fire Protection	Sprinklers	2
Elite Flooring	Tile	4
Feltman Brothers	Masonry - West	0
First Choice Glass	Glazing	0
Gainesville Mechanical	Mechanical	3
Gill Plumbing	Plumbing	0
Gregory Electric	Electrical – HUB	5
Johnson Controls	Controls	2
Johnsons Modern Electric	Electrical	0
King Asphalt	Asphalt	10
Kone	Elevators	0
Labor Finders	Labor Force	6
Metro Power	Hub/Sitework Electrical	6
Nations Roofing	Roofing	0
Precision	Concrete	5
Professional Door	Doors & Hardware	0
Pyramid Masonry	Masonry - HUB	0
Reeves Young	Site Grading & Utilities	0
Sears Contract	Drywall/Metal Trusses	0
Sentinel Maintenance	Construction Cleaning	0
Simplex	Controls	0
Southern Mechanical Inc.	Mechanical/Plumbing	12
Southern MEP	Mechanical/Plumbing	6
Specialty Finishes	Painting	0
Spectrum Interiors	Drywall - HUB	12
TOTAL		93



SAFETY REPORT

- Total Man Hours Worked This Week: 4,568
- Total Man Hours on Project: 1,888,924
- Crafts On Project This Week: 15



INSPECTIONS/TESTING REPORT



ENVIRONMENTAL REPORT

- Pursuing LEED Silver Certification
- Waste Diverted = 27,440 CY