



# HOLDER CONSTRUCTION COMPANY

Superintendent's Weekly Activity Report #169  
Douthit Hills Student Community, Clemson University Project  
Rush Dunaway





## CURRENT CONSTRUCTION ACTIVITIES

### WEST ZONE

- Completed Installing Wireless Access Points in Bldg. C.
- Completed Cleaning Interior Windows in the West Zone.
- Completed Installing Lobby Furniture in Buildings B, C, and D.
- Completed Installing AV Accessories in the Lobbies.
- Completed Final Clean in Building B Corridors.
- Completed Pulling Cable for Power Logix System.
- Continued Signing Off Punch List Items in the West Zone.
- Continued Installing Living Room Furniture in the West Zone.
- Continued Installing Exterior Furniture in the West Zone.
- Began Installing Wireless Access Points in Bldg. D.
- Began Signing Off Warranty Items in the West Zone.



Hub Stair Handrails

### HUB

- Completed Installing Stairwell Handrails.
- Continued Ductwork Installation on 2<sup>nd</sup> Floor.
- Continued MEP In-wall Rough-in on 2<sup>nd</sup> Floor.
- Continued Hanging and Finishing Drywall on 2<sup>nd</sup>/3<sup>rd</sup> Floors.
- Continued Terrazo Installation on 3<sup>rd</sup> Floor.
- Continued Overhead Door Installation in the Basement.
- Continued Thermoplastic Flooring on 3<sup>rd</sup> Floor.
- Continued Installing Refrigeration Lines on 3<sup>rd</sup> Floor.
- Began Installing Kitchen Equipment on 3<sup>rd</sup> Floor.



Hub Wall Tile and Kitchen Equipment

### SITE

- Completed Grading South of the Hub.
- Continued Working on Civil and Landscape Punch Items.
- Continued Pouring Curb and Gutter at Highway 93.
- Continued Pouring Fire Lane South of the Hub.
- Continued Pole Light Raceway Installation.



## NEXT WEEK'S ACTIVITIES

### WEST ZONE

- Continue Installing Wireless Access Points in Building D.
- Continue Signing Off Punch List Items in the West Zone.
- Continue Installing Living Room Furniture in the West Zone.
- Continue Installing Card Readers in the West Zone.
- Continue Installing Raceway for CCIT Cameras.
- Continue Pulling/Terminating Cable for CCIT Cameras.
- Continue Installing Wireless Access Points in Building D.
- Continue Signing off Warranty Items in the West Zone.



Wall and Ceiling Cover-up Hub 3<sup>rd</sup> Floor

### HUB

- Continue Ductwork Installation on 2<sup>nd</sup> Floor.
- Continue MEP In-wall Rough-in on 2<sup>nd</sup> Floor.
- Continue Hanging and Finishing Drywall on 2<sup>nd</sup>/3<sup>rd</sup> Floors.
- Continue Terrazo Installation on 3<sup>rd</sup> Floor.
- Continue Freezer Installation on 3<sup>rd</sup> Floor.
- Continue Installing Kitchen Equipment on the 3<sup>rd</sup> Floor.
- Continue Installing Refrigeration Lines on the 3<sup>rd</sup> Floor.
- Begin Installing Wall Tile at Pizza Garden.

### SITE

- Complete Forming/Pouring Curb and Gutter at Highway 93.
- Complete Pouring the Fire Lane at Highway 93.
- Continue Working on Civil and Landscape Punch Items.
- Continue Pole Light Raceway Installation.
- Continue Saw-cutting Fire Lane.



Hub Area Grading and Sidewalks



# HOLDER CONSTRUCTION COMPANY

Superintendent's Weekly Activity Report #169  
Douthit Hills Student Community, Clemson University Project  
Rush Dunaway



## WEATHER

CURRENT WEEK

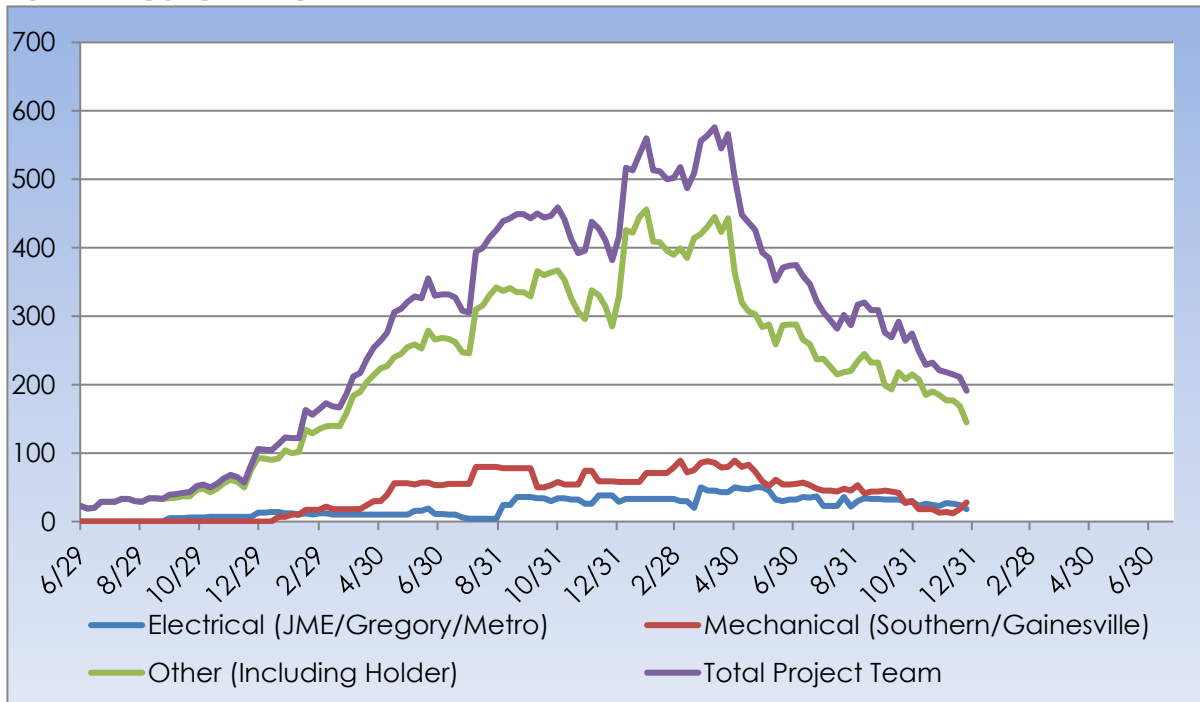
<b>30</b> Clear Actual: <b>73°   44°</b> 0.00 in Average: <b>75°   51°</b> 0.07 in	<b>1</b> Fog Actual: <b>79°   46°</b> 0.00 in Average: <b>77°   52°</b> 0.18 in	<b>2</b> Fog Actual: <b>80°   52°</b> 0.00 in Average: <b>77°   52°</b> 0.11 in	<b>3</b> Clear Actual: <b>81°   57°</b> 0.00 in Average: <b>77°   51°</b> 0.20 in	<b>4</b> Clear Forecast: <b>81°   61°</b> 0.0 in Average: <b>75°   50°</b> 0.20 in
--	---	---	---	--

Rain Days This Week = 0    Rain Days to Date = 101



## MANPOWER

TOTAL PROJECT LABOR





## MANPOWER

### TOTAL PROJECT LABOR

TRADE CONTRACTORS ON-SITE		
Subcontractor	Trade	Number of Employees
Holder Construction Company	General Contractor	13
Accessories Unlimited	Accessories	2
Brightview Landscape Development	Hardscape & Landscape	8
Cabinets By Design	Millwork	2
Carolina Fire Protection	Sprinklers	0
Elite Flooring	Tile	4
Feltman Brothers	Masonry - West	0
First Choice Glass	Glazing	2
Gainesville Mechanical	Mechanical	0
Gill Plumbing	Plumbing	5
Gregory Electric	Electrical – HUB	5
Johnson Controls	Controls	2
Johnsons Modern Electric	Electrical	1
King Asphalt	Asphalt	0
Kone	Elevators	0
Labor Finders	Labor Force	12
Metro Power	Sitework Electrical	18
Nations Roofing	Roofing	5
Precision	Concrete	5
Professional Door	Doors & Hardware	6
Pyramid Masonry	Masonry - HUB	2
Reeves Young	Site Grading & Utilities	3
Sears Contract	Drywall/Metal Trusses	0
Sentinel Maintenance	Construction Cleaning	3
Simplex	Controls	12
Southern Mechanical Inc.	Mechanical/Plumbing	12
Southern MEP	Mechanical/Plumbing	6
Specialty Finishes	Painting	0
Spectrum Interiors	Drywall - HUB	12
<b>TOTAL</b>		<b>130</b>





## SAFETY REPORT

- Total Man Hours Worked This Week: 5,409
- Total Man Hours on Project: 1,871,193
- Crafts On Project This Week: 19



## INSPECTIONS/TESTING REPORT

- In-wall Rough-in Inspection on the 2<sup>nd</sup> Floor of the Hub.
- Domestic Plumbing Inspection on the 2<sup>nd</sup> Floor of the Hub.
- In-wall Rough-in Inspection at Knee Walls on the 3<sup>rd</sup> Floor of the Hub.
- Ceiling Cover-up Inspection at Pizza Garden.



## ENVIRONMENTAL REPORT

- Pursuing LEED Silver Certification
- Waste Diverted = 26,430 CY