



HOLDER CONSTRUCTION COMPANY

Superintendent's Weekly Activity Report #167
Douthit Hills Student Community, Clemson University Project
Rush Dunaway





CURRENT CONSTRUCTION ACTIVITIES

WEST ZONE

- Received Certificate of Occupancy in A, B, C, and D.
- Completed Final Clean in Building C Corridors.
- Completed Installing Washing Machines/Dryers in D.
- Continued Signing Off Punch List Items.
- Continued Cleaning Interior Windows.
- Continued Installing Lobby Furniture in Buildings B, C and D.
- Continued Installing Living Room Furniture.
- Continued Installing AV Accessories in the Lobbies.
- Began Final Clean in Building B Corridors.



West Zone from the Spine Road

HUB

- Continued Wall Framing on 2nd Floor.
- Continued Installing Stairwell Handrails.
- Continued MEP In-wall Rough-in on 2nd Floor.
- Continued Hanging and Finishing Drywall on 2nd/3rd Floors.
- Continued Terrazo Installation on 3rd Floor.
- Continued Overhead Door Installation in the Basement.
- Began Thermoplastic Flooring on 3rd Floor.
- Began Installing Refrigeration Lines on 3rd Floor.

SITE

- Completed Installing Brick Pavers at the Building B Pool.
- Completed Last Phase of Hydroseeding.
- Completed Final Striping Plan in the Hub and East Lots.
- Continued Working on Civil and Landscape Punch Items.
- Continued Removing Rock and Grading South of the Hub.
- Continued Pouring Sidewalks and Stairs South of the Hub.



Building E Lounge Area



NEXT WEEK'S ACTIVITIES

WEST ZONE

- Continue Signing Off Punch List Items.
- Continue Installing Lobby Furniture.
- Continue Installing Living Room Furniture.
- Continue Installing Wireless Access Points in Building C.
- Continue Final Clean In Building B Corridors.
- Continue Cleaning Staircase Windows in Building B.
- Continue Installing AV Accessories in the Lobbies.



Building E Study Room

HUB

- Continue MEP In-wall Rough-in on 2nd Floor.
- Continue Hanging and Finishing Drywall on 2nd/3rd Floors.
- Continue Terrazo Installation on 3rd Floor.
- Continue Installing Restroom and Back of House Tile.
- Continue Thermoplastic Flooring on 3rd Floor.
- Begin Pouring Freezer Slab on 3rd Floor.
- Begin Freezer Installation on 3rd Floor.



Building B Lobby

SITE

- Continue Working on Civil and Landscape Punch Items.
- Continue Removing Rock and Grading South of the Hub.
- Continue Pouring Sidewalks South of the Hub.
- Continue Pole Light Raceway Installation.
- Begin Pouring Remaining Sections of Fire Lane to Hwy. 93.



HOLDER CONSTRUCTION COMPANY

Superintendent's Weekly Activity Report #167
Douthitt Hills Student Community, Clemson University Project
Rush Dunaway



WEATHER

CURRENT WEEK

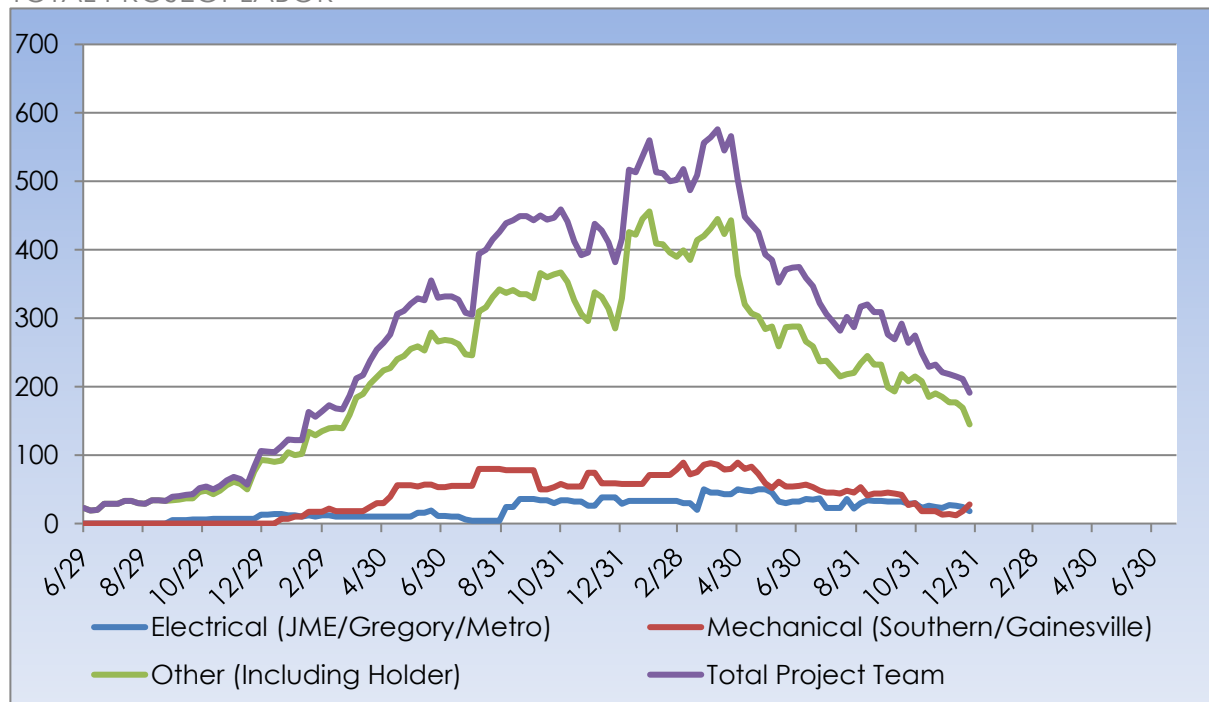
16	Scattered Clouds	17	Clear	18	Clear	19	Clear	20	Clear
Actual: 53° 37° 0.00 in	Actual: 75° 34° 0.00 in	Actual: 82° 57° 0.00 in	Actual: 72° 48° 0.00 in	Forecast: 67° 45° 0.0 in					
Average: 73° 46° 0.06 in	Average: 72° 46° 0.07 in	Average: 74° 47° 0.12 in	Average: 74° 49° 0.12 in	Average: 74° 47° 0.09 in					

Rain Days This Week = 0 Rain Days to Date = 100



MANPOWER

TOTAL PROJECT LABOR





HOLDER CONSTRUCTION COMPANY

Superintendent's Weekly Activity Report #167
Douthit Hills Student Community, Clemson University Project
Rush Dunaway



MANPOWER

TOTAL PROJECT LABOR

TRADE CONTRACTORS ON-SITE		
Subcontractor	Trade	Number of Employees
Holder Construction Company	General Contractor	13
Accessories Unlimited	Accessories	0
Brightview Landscape Development	Hardscape & Landscape	6
Cabinets By Design	Millwork	0
Carolina Fire Protection	Sprinklers	3
Elite Flooring	Tile	4
Feltman Brothers	Masonry - West	0
First Choice Glass	Glazing	0
Gainesville Mechanical	Mechanical	0
Gill Plumbing	Plumbing	3
Gregory Electric	Electrical – HUB	5
Johnson Controls	Controls	0
Johnsons Modern Electric	Electrical	2
King Asphalt	Asphalt	0
Kone	Elevators	0
Labor Finders	Labor Force	12
Metro Power	Sitework Electrical	18
Nations Roofing	Roofing	0
Precision	Concrete	2
Professional Door	Doors & Hardware	0
Pyramid Masonry	Masonry - HUB	2
Reeves Young	Site Grading & Utilities	6
Sears Contract	Drywall/Metal Trusses	0
Sentinel Maintenance	Construction Cleaning	3
Simplex	Controls	12
Southern Mechanical Inc.	Mechanical/Plumbing	12
Southern MEP	Mechanical/Plumbing	6
Specialty Finishes	Painting	0
Spectrum Interiors	Drywall - HUB	12
TOTAL		116



SAFETY REPORT

- Total Man Hours Worked This Week: 5,472
- Total Man Hours on Project: 1,861,816
- Crafts On Project This Week: 17



INSPECTIONS/TESTING REPORT

Smokehouse Ceiling Cover-up Inspection
Basement Final Electrical Inspection



ENVIRONMENTAL REPORT

- Pursuing LEED Silver Certification
- Waste Diverted = 26,190 CY