



HOLDER CONSTRUCTION COMPANY

Superintendent's Weekly Activity Report #162
Douthit Hills Student Community, Clemson University Project
Tony Greene





CURRENT CONSTRUCTION ACTIVITIES

WEST ZONE

- Completed Final Clean in C4 Units.
- Completed Fire Alarm Testing in D Corridors.
- Completed Final Coat of Paint in Building D Corridors.
- Completed Final Paint in CL1 Through C5 Corridors.
- Continued Installing Blinds in Building D.
- Continued Signing Off Punch List Items in the West Zone.
- Continued Cleaning Exterior Windows in the West Zone.
- Continued Test & Balance in Buildings C and D.
- Continued Installing Appliances in Buildings C and D.
- Began Final Clean in C5 Units.
- Began Architectural Punch of Building B Corridors.



HUB 1st Floor Ceiling Tile Install

HUB

- Completed Welded Duct Inspections on 3rd Floor.
- Completed Barnes and Noble Curtain Walls.
- Continued Wall Framing on 2nd Floor.
- Began FRP Install on 3rd Floor.
- Began Piping Install in Staff Bathrooms.

SITE

- Completed Cleaning Out/Installing Trench Drains.
- Completed Sanding and Painting Parking Lot Bollards.
- Continued Saw-cutting Control Joints in Equipment Pads.
- Continued Working On Civil and Landscape Punch Items.
- Began Installing Bollards and Bumpers North of Building D.



HUB 1st Floor Carpet Install



NEXT WEEK'S ACTIVITIES

WEST ZONE

- Complete Installing Blinds in Building D.
- Complete Installing Equipment in Bldg. B Pool Room.
- Complete Test and Balance in Building C.
- Continue Signing Off Punch List Items in the West Zone.
- Continue Installing Appliances in Building D.
- Continue Installing Wireless Access Points in Building B.
- Continue Cleaning Exterior Windows in the West Zone.
- Continue Final Paint in Building D Corridors.
- Continue Final Clean in C5 Units.
- Continue Backpunching B5 and B6 Units.
- Continue Test and Balance in Building D.
- Begin Backpunching CL1 through C2 Units.

HUB

- Complete Barnes and Noble Architectural Punch.
- Begin MEP In-wall Rough-in on 2nd Floor.
- Begin Ceiling Grid Install in Main Kitchen Area.

SITE

- Complete Installing Bollards/Bumpers North of Building D.
- Continue Working on Civil and Landscape Punch Items.
- Begin Pouring Remaining West Parking Lot Curbs/Gutters.
- Begin Cleaning West Parking Lots for Wearing Course.



Building D Appliance Installation



Building B Window Cleaning



WEATHER

CURRENT WEEK

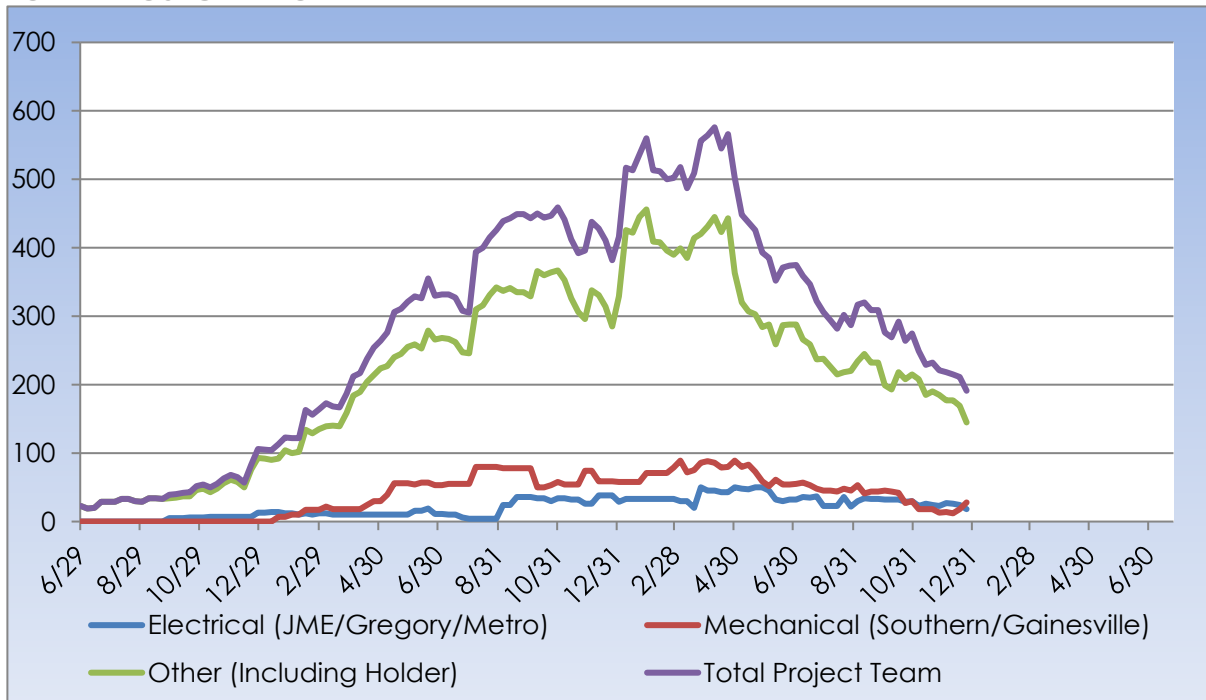
Day	Weather	Actual High/Low	Actual Rain	Average High/Low	Average Rain
12	Rain	53° 41°	0.38 in	65° 40°	0.12 in
13	Clear	54° 32°	0.00 in	65° 39°	0.38 in
14	Clear	51° 35°	0.00 in	64° 38°	0.20 in
15	Clear	69° 33°	0.00 in	65° 37°	0.09 in
16	Clear	Forecast: 74° 49°	0.02 in	Average: 64° 40°	0.14 in

Rain Days This Week = 1 Rain Days to Date = 100



MANPOWER

TOTAL PROJECT LABOR





MANPOWER

TOTAL PROJECT LABOR

TRADE CONTRACTORS ON-SITE		
Subcontractor	Trade	Number of Employees
Holder Construction Company	General Contractor	16
Accessories Unlimited	Accessories	2
Brightview Landscape Development	Hardscape & Landscape	8
Cabinets By Design	Millwork	0
Carolina Fire Protection	Sprinklers	3
Elite Flooring	Tile	4
Feltman Brothers	Masonry - West	0
First Choice Glass	Glazing	3
Gainesville Mechanical	Mechanical	0
Gill Plumbing	Plumbing	3
Gregory Electric	Electrical – HUB	10
Johnson Controls	Controls	4
Johnsons Modern Electric	Electrical	3
King Asphalt	Asphalt	0
Kone	Elevators	0
Labor Finders	Labor Force	14
Metro Power	Sitework Electrical	3
Nations Roofing	Roofing	0
Precision	Concrete	0
Professional Door	Doors & Hardware	2
Pyramid Masonry	Masonry - HUB	0
Reeves Young	Site Grading & Utilities	4
Sears Contract	Drywall/Metal Trusses	10
Sentinel Maintenance	Construction Cleaning	8
Simplex	Controls	12
Southern Mechanical Inc.	Mechanical/Plumbing	12
Southern MEP	Mechanical/Plumbing	6
Specialty Finishes	Painting	9
Spectrum Interiors	Drywall - HUB	12
TOTAL		140



SAFETY REPORT

- Total Man Hours Worked This Week: 3,248
- Total Man Hours on Project: 1,813,739
- Crafts On Project This Week: 21



INSPECTIONS/TESTING REPORT

- Welded Duct Inspection HUB 3rd Floor.



ENVIRONMENTAL REPORT

- Pursuing LEED Silver Certification
- Waste Diverted = 25,260 CY