



# HOLDER CONSTRUCTION COMPANY

Superintendent's Weekly Activity Report #161  
Douthit Hills Student Community, Clemson University Project  
Tony Greene





## CURRENT CONSTRUCTION ACTIVITIES

### WEST ZONE

- Completed Final Paint in Building B Electrical Rooms.
- Completed Final Clean in C1 Units.
- Completed Installing Carpet/Base in Building D Corridors.
- Completed Final Clean of B6 Units.
- Completed Installing Carpet in Building D Units.
- Continued Signing Off Punch List Items in the West Zone.
- Continued Cleaning Exterior Windows in the West Zone.
- Continued Test & Balance in Buildings C and D.
- Continued Fire Alarm Testing in D Corridors.
- Continued Installing Appliances in Building C.
- Began Final Coat of Paint in Building D Corridors.
- Began Final Paint in CL1 Through C5 Corridors.
- Began Installing Landscape Lighting at Pool.



Wood Slat Seat Walls

### HUB

- Completed Installation of Carpet on 1<sup>st</sup> Floor.
- Continued Hanging Drywall on 3<sup>rd</sup> Floor.
- Continued In-wall Inspections on 3<sup>rd</sup> Floor.
- Continued In-wall Rough-in at Main Bathroom.
- Began Wall Framing on 2<sup>nd</sup> Floor.

### SITE

- Completed Working on SWPP Items.
- Completed Pressure Washing/Caulking West Zone Sidewalks.
- Continued Working On Civil and Landscape Punch Items.
- Began Cleaning Out/Installing Trench Drains.
- Began Sanding and Painting Bollards.



Completed Architectural Punch Building B Corridors



## NEXT WEEK'S ACTIVITIES

### WEST ZONE

- Complete Final Paint in Building C Corridors.
- Complete Final Paint in Building C Electrical Rooms.
- Complete Installing Blinds in Building D.
- Continue Signing Off Punch List Items in the West Zone.
- Continue Installing Equipment in Bldg. B Pool Room.
- Continue Installing Wireless Access Points in Building B.
- Continue Cleaning Exterior Windows in the West Zone.
- Continue Final Paint in Building D Corridors.
- Continue Test and Balance in Building D.
- Begin Final Clean in C3 Units.
- Begin Installing Appliances in Building D.



Building D Lobby

### HUB

- Continue MEP Inspections in Basement/Barnes and Noble.
- Continue Trim-out on 1<sup>st</sup> Floor.
- Continue Final Paint on 1<sup>st</sup> Floor.
- Continue Framing on 2<sup>nd</sup> Floor.
- Begin Architectural Punch in the Basement.

### SITE

- Complete Installing Wood Slat Seat Walls.
- Continue Pressure Washing/Caulking West Zone Sidewalks.
- Continue Working on Civil and Landscape Punch Items.
- Begin Installing Bollards and Bumpers.



HUB 2<sup>nd</sup> Floor Wall Framing



## WEATHER

### CURRENT WEEK

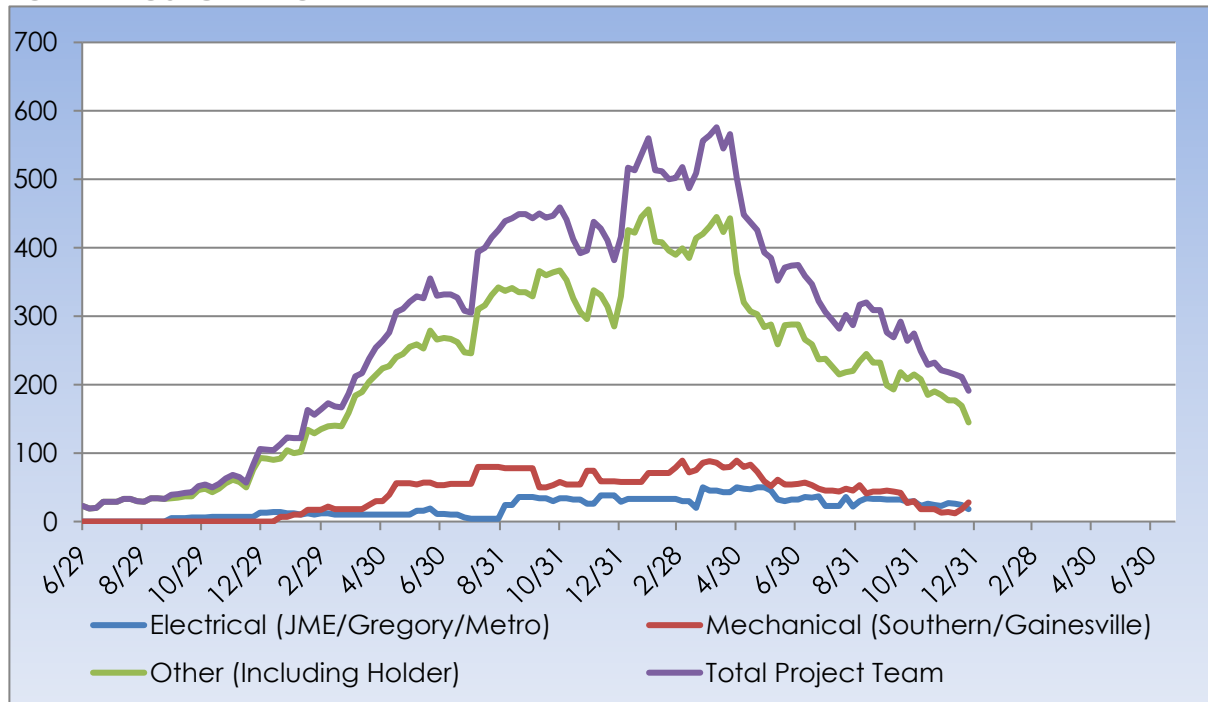
<b>5</b> Partly Cloudy Actual: <b>60°</b>   <b>37°</b> 0.00 in Average: <b>63°</b>   <b>40°</b> 0.15 in	<b>6</b> Rain Actual: <b>53°</b>   <b>46°</b> 0.31 in Average: <b>62°</b>   <b>37°</b> 0.16 in	<b>7</b> Scattered Clouds Actual: <b>51°</b>   <b>34°</b> 0.00 in Average: <b>62°</b>   <b>36°</b> 0.12 in	<b>8</b> Scattered Clouds Actual: <b>48°</b>   <b>32°</b> 0.00 in Average: <b>62°</b>   <b>35°</b> 0.13 in	<b>9</b> Clear Forecast: <b>59°</b>   <b>40°</b> 0.0 in Average: <b>62°</b>   <b>35°</b> 0.11 in
---------------------------------------------------------------------------------------------------------------------	------------------------------------------------------------------------------------------------------------	------------------------------------------------------------------------------------------------------------------------	------------------------------------------------------------------------------------------------------------------------	--------------------------------------------------------------------------------------------------------------

Rain Days This Week = 0      Rain Days to Date = 99



## MANPOWER

### TOTAL PROJECT LABOR







## MANPOWER

### TOTAL PROJECT LABOR

TRADE CONTRACTORS ON-SITE		
Subcontractor	Trade	Number of Employees
Holder Construction Company	General Contractor	16
Accessories Unlimited	Accessories	2
Brightview Landscape Development	Hardscape & Landscape	8
Cabinets By Design	Millwork	0
Carolina Fire Protection	Sprinklers	3
Elite Flooring	Tile	4
Feltman Brothers	Masonry - West	0
First Choice Glass	Glazing	3
Gainesville Mechanical	Mechanical	0
Gill Plumbing	Plumbing	3
Gregory Electric	Electrical – HUB	10
Johnson Controls	Controls	4
Johnsons Modern Electric	Electrical	3
King Asphalt	Asphalt	0
Kone	Elevators	0
Labor Finders	Labor Force	14
Metro Power	Sitework Electrical	3
Nations Roofing	Roofing	0
Precision	Concrete	0
Professional Door	Doors & Hardware	2
Pyramid Masonry	Masonry - HUB	0
Reeves Young	Site Grading & Utilities	4
Sears Contract	Drywall/Metal Trusses	10
Sentinel Maintenance	Construction Cleaning	8
Simplex	Controls	12
Southern Mechanical Inc.	Mechanical/Plumbing	12
Southern MEP	Mechanical/Plumbing	6
Specialty Finishes	Painting	9
Spectrum Interiors	Drywall - HUB	12
<b>TOTAL</b>		<b>140</b>



## SAFETY REPORT

- Total Man Hours Worked This Week: 3,560
- Total Man Hours on Project: 1,810, 528
- Crafts On Project This Week: 21



## INSPECTIONS/TESTING REPORT

- Completed Fire Alarm Final Inspection in Building D.



## ENVIRONMENTAL REPORT

- Pursuing LEED Silver Certification
- Waste Diverted = 25,160 CY