



HOLDER CONSTRUCTION COMPANY

Superintendent's Weekly Activity Report #151
Douthit Hills Student Community, Clemson University Project
Tony Greene





CURRENT CONSTRUCTION ACTIVITIES

WEST ZONE

- Completed Final Clean in Building A.
- Completed 1st Coat of Paint in B1 Corridor.
- Completed Building A Final Elevator Inspection.
- Completed DEFS Application at Building B Breezeway.
- Continued Test & Balance in Building B and C.
- Continued Fire Alarm Testing in Building B.
- Continued Ceiling Tile Installation in Building B.
- Began 1st Coat of Paint in B2 Corridor.
- Began Point-up in B4 and B5 Corridor.
- Began 1st Coat of Paint in D3 Units.
- Began 2nd Coat of Paint in C2 Units.
- Began Point-up in D4 and D5 Units.

HUB & SITE

- Completed Straw Matting at Retention Pond.
- Completed Straw Matting at Daniel Square Ramps.
- Completed Grading and Proof Rolling Fire Lane.
- Completed Setting Vent Hoods on HUB 3rd Floor.
- Continued Installing Conduit in HUB 3rd Flr Electrical Room.
- Continued Metal Panel Install at HUB Breezeway.
- Continued Brick Pavers Between Bldgs B & C.
- Continued Irrigation & Topsoil at the Pedestrian Bridge.
- Continued Planting Trees & Shrubs on the West Zone.
- Began Framing on HUB 3rd Floor.
- Began Setting Storm Clean-out Boxes.



HUB Breezeway Metal Panel Installation



BL-1 Mechanical Room Rough Clean



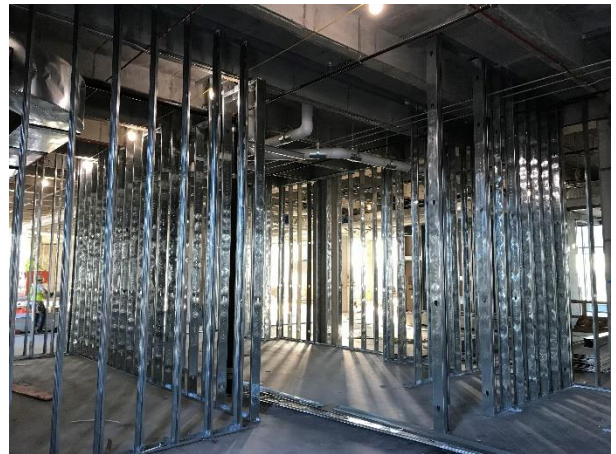
NEXT WEEK'S ACTIVITIES

WEST ZONE

- Complete Point-up in B4 and B5 Corridors.
- Complete Point-up in D4 and D5 Units.
- Complete 1st Coat of Paint in D3 Units.
- Complete Mirror Installation in D3 Units.
- Complete Fire Alarm Testing in Building B.
- Continue Installing Accessories in D5 and D6 Units.
- Continue Overhead Trim-out in C1 Lobby Ceiling.
- Continue Ceiling Tile Installation in Building B.
- Continue Test and Balance in Building C.
- Begin DEFS Application at Building C Breezeway.
- Begin Carpet and Base in B1 Corridor.
- Begin MEP Trim-out in D2 Units.
- Begin Fire Alarm Testing in Building C.

HUB & SITE

- Complete Metal Panel Install at HUB Breezeway.
- Complete Sod Placement West of Building A.
- Complete Irrigation & Topsoil at the Pedestrian Bridge.
- Complete Brick Pavers Between Buildings B & C.
- Continue Installing Conduit in HUB 3rd Flr Electrical Room.
- Continue Planting Trees & Shrubs in the West Zone.
- Continue Framing on HUB 3rd Floor.
- Begin Final Coat of Paint in HUB Starbucks & Fresh Market.
- Begin Brick Pavers at Building D Site Wall.
- Begin Cleaning and Testing Sewer Manholes.



HUB 3rd Floor Framing



Building B Breezeway DEFS Complete



WEATHER

CURRENT WEEK

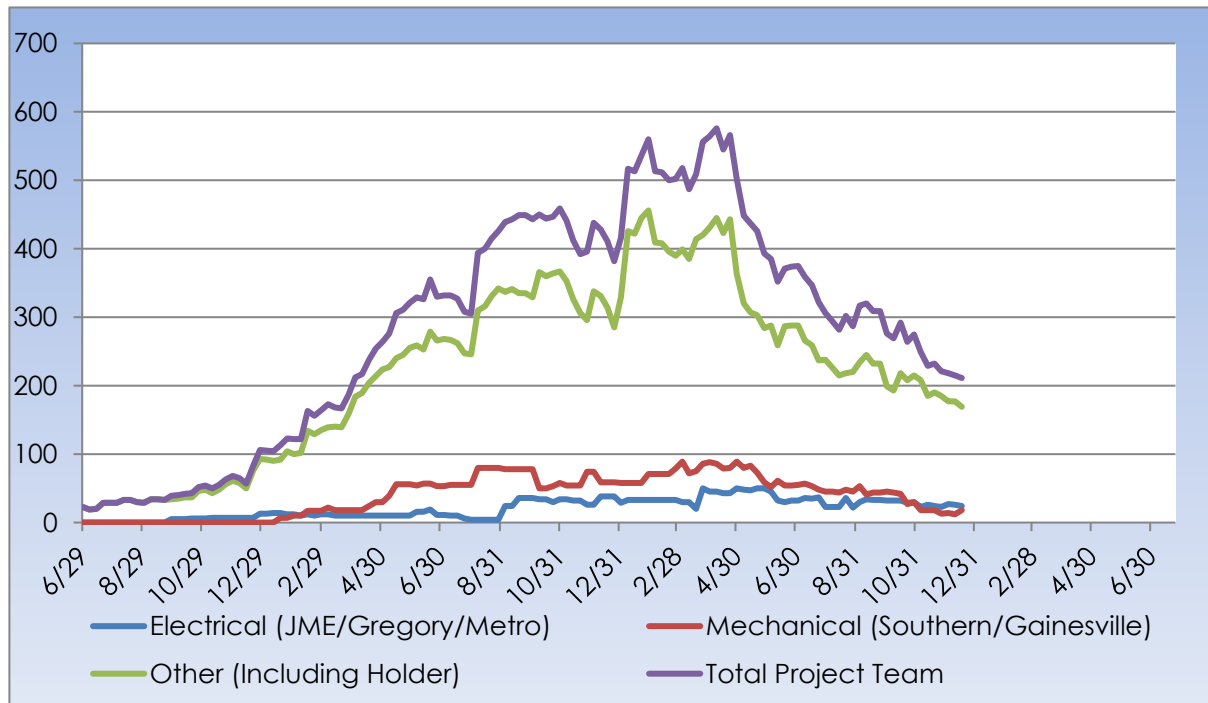
25 Clear Actual: 42° 33° 0.00 in Average: 51° 32° 0.22 in	26 Scattered Clouds Actual: 46° 30° 0.00 in Average: 50° 30° 0.09 in	27 Partly Cloudy Actual: 48° 33° 0.00 in Average: 51° 30° 0.02 in	28 Scattered Clouds Actual: 37° 28° 0.00 in Average: 52° 33° 0.27 in	29 Partly Cloudy Forecast: 48° 33° 0.0 in Average: 52° 31° 0.13 in
--	---	--	---	---

Rain Days This Week = 0 Rain Days to Date = 92



MANPOWER

TOTAL PROJECT LABOR





MANPOWER

TOTAL PROJECT LABOR

TRADE CONTRACTORS ON-SITE		
Subcontractor	Trade	Number of Employees
Holder Construction Company	General Contractor	16
Accessories Unlimited	Accessories	2
Brightview Landscape Development	Hardscape & Landscape	0
Cabinets By Design	Millwork	2
Carolina Fire Protection	Sprinklers	3
Elite Flooring	Tile	0
Feltman Brothers	Masonry - West	10
First Choice Glass	Glazing	0
Gainesville Mechanical	Mechanical	0
Gill Plumbing	Plumbing	10
Gregory Electric	Electrical – HUB	6
Johnson Controls	Controls	5
Johnsons Modern Electric	Electrical	14
King Asphalt	Asphalt	0
Kone	Elevators	0
Labor Finders	Labor Force	10
Metro Power	Sitework Electrical	4
Nations Roofing	Roofing	0
Precision	Concrete	12
Professional Door	Doors & Hardware	6
Pyramid Masonry	Masonry - HUB	2
Reeves Young	Site Grading & Utilities	10
Sears Contract	Drywall/Metal Trusses	30
Sentinel Maintenance	Construction Cleaning	2
Simplex	Controls	5
Southern Mechanical Inc.	Mechanical/Plumbing	12
Southern MEP	Mechanical/Plumbing	6
Specialty Finishes	Painting	12
Staff Zone	Labor Force	2
Steel Toe	Labor Force	2
TOTAL		162



SAFETY REPORT

- Total Man Hours Worked This Week: 7,853
- Total Man Hours on Project: 1,746,288
- Crafts On Project This Week: 18



INSPECTIONS/TESTING REPORT



ENVIRONMENTAL REPORT

- Pursuing LEED Silver Certification
- Waste Diverted = 22,850 CY