



# HOLDER CONSTRUCTION COMPANY

Superintendent's Weekly Activity Report #152  
Douthit Hills Student Community, Clemson University Project  
Tony Greene





## CURRENT CONSTRUCTION ACTIVITIES

### WEST ZONE

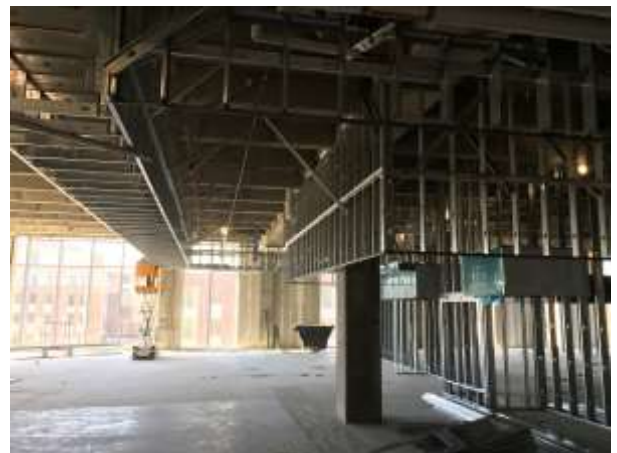
- Completed DEFS Application at Building C & D Entrances.
- Completed 1<sup>st</sup> Coat of Paint in B2 Corridor.
- Completed Point-up in B4 and B5 Corridor.
- Continued Test & Balance in Building C.
- Continued Fire Alarm Testing in Building B.
- Continued Ceiling Tile Installation in B3 Corridor.
- Continued 2<sup>nd</sup> Coat of Paint in C2 Units.
- Began 1<sup>st</sup> Coat of Paint in B3 Corridor.
- Began 1<sup>st</sup> Coat of Paint in D4 Units.
- Began Point-up in B6 Corridor.
- Began Point-up in D5 and D6 Units.
- Began Rough Clean on D1 & D2 Units.



Appliance Installation in B4 Unit

### HUB & SITE

- Completed Metal Panel Install at HUB Breezeway.
- Completed Setting Clean-outs & Fire Hydrants West Zone.
- Continued Framing on HUB 3<sup>rd</sup> Floor.
- Continued Conduit Rough-in HUB 3<sup>RD</sup> Floor.
- Continued Brick Pavers Between Bldgs B & C.
- Continued Irrigation & Topsoil at the Pedestrian Bridge.
- Continued Irrigation & Topsoil in the West Spine.
- Continued Planting Trees & Shrubs in the West Spine.
- Began Mechanical Pipe Installation on HUB 3<sup>RD</sup> Floor.
- Began Final Coat of Paint in HUB Starbucks & Fresh Market.
- Began Cleaning and Testing Sewer Manholes.



HUB Smokehouse Soffit Framing



## NEXT WEEK'S ACTIVITIES

### WEST ZONE

- Complete Point-up in B6 Corridor.
- Complete Point-up in D5 Units.
- Complete 1<sup>st</sup> Coat of Paint in D4 Units.
- Continue Overhead Trim-out in C1 Lobby Ceiling.
- Continue Test and Balance in Building C.
- Continue Fire Alarm Testing in Building C.
- Begin Water-side FCU Commissioning in Building B.
- Begin Ceiling Tile Installation in B4 Corridor.
- Begin Carpet and Base in B2 Corridor.
- Begin MEP Trim-out in D3 & D4 Units.



Building B Breezeway Trim-out

### HUB & SITE

- Complete Final Coat of Paint in HUB Starbucks & FM.
- Complete Building D Site Wall Concrete.
- Complete Irrigation & Topsoil at the Pedestrian Bridge.
- Complete Brick Pavers Between Buildings B & C.
- Continue Framing on HUB 3<sup>RD</sup> Floor.
- Continue Mechanical Pipe Installation on HUB 3<sup>RD</sup> Floor.
- Continue Cleaning and Testing Sewer Manholes.
- Continue Planting Trees & Shrubs in the West Zone.
- Continue Pedestrian Bridge Punch List.
- Begin Brick Pavers at Building D Site Wall.
- Begin Pedestrian Bridge Punch List.



Hydronic Piping HUB 3<sup>RD</sup> Floor



## WEATHER

CURRENT WEEK

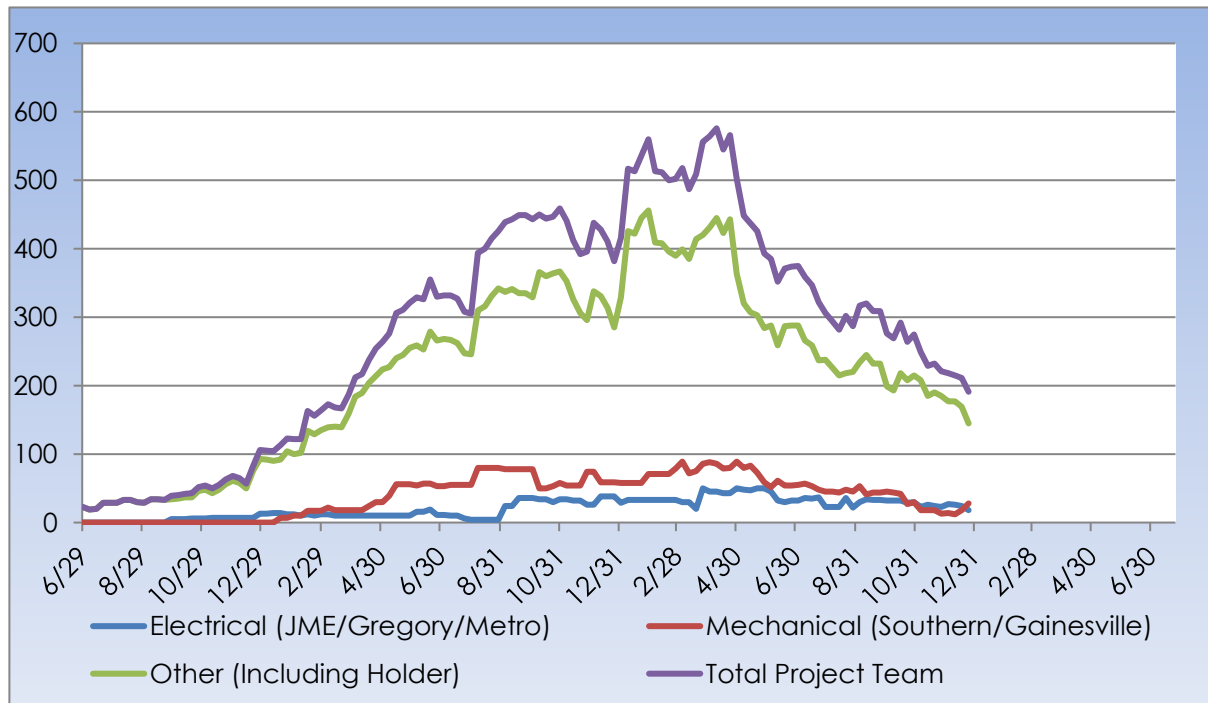
<b>1</b> Partly Cloudy Actual: <b>30°   18°</b> 0.00 in Average: <b>53°   34°</b> 0.27 in	<b>2</b> Clear Actual: <b>34°   14°</b> 0.00 in Average: <b>53°   33°</b> 0.11 in	<b>3</b> Scattered Clouds Actual: <b>35°   21°</b> 0.00 in Average: <b>52°   32°</b> 0.18 in	<b>4</b> Clear Actual: <b>36°   19°</b> 0.00 in Average: <b>52°   32°</b> 0.27 in	<b>5</b> Clear Forecast: <b>39°   20°</b> 0.0 in Average: <b>52°   30°</b> 0.14 in
---	---	--	---	--

Rain Days This Week = 0      Rain Days to Date = 92



## MANPOWER

TOTAL PROJECT LABOR





## MANPOWER

### TOTAL PROJECT LABOR

TRADE CONTRACTORS ON-SITE		
Subcontractor	Trade	Number of Employees
Holder Construction Company	General Contractor	24
Accessories Unlimited	Accessories	2
Brightview Landscape Development	Hardscape & Landscape	13
Cabinets By Design	Millwork	2
Carolina Fire Protection	Sprinklers	3
Elite Flooring	Tile	0
Feltman Brothers	Masonry - West	0
First Choice Glass	Glazing	2
Gainesville Mechanical	Mechanical	0
Gill Plumbing	Plumbing	10
Gregory Electric	Electrical – HUB	6
Johnson Controls	Controls	5
Johnsons Modern Electric	Electrical	14
King Asphalt	Asphalt	0
Kone	Elevators	4
Labor Finders	Labor Force	15
Metro Power	Sitework Electrical	4
Nations Roofing	Roofing	0
Precision	Concrete	10
Professional Door	Doors & Hardware	6
Pyramid Masonry	Masonry - HUB	0
Reeves Young	Site Grading & Utilities	5
Sears Contract	Drywall/Metal Trusses	30
Sentinel Maintenance	Construction Cleaning	10
Simplex	Controls	5
Southern Mechanical Inc.	Mechanical/Plumbing	12
Southern MEP	Mechanical/Plumbing	6
Specialty Finishes	Painting	12
Staff Zone	Labor Force	2
Steel Toe	Labor Force	2
<b>TOTAL</b>		<b>204</b>



## SAFETY REPORT

- Total Man Hours Worked This Week: 9,235
- Total Man Hours on Project: 1,757,751
- Crafts On Project This Week: 20



## INSPECTIONS/TESTING REPORT

- BLE – Proof-Roll at West Firelane
- CC&I – In-wall Inspection - East Elevator Shaft



## ENVIRONMENTAL REPORT

- Pursuing LEED Silver Certification
- Waste Diverted = 22, 850 CY