



# HOLDER CONSTRUCTION COMPANY

Superintendent's Weekly Activity Report #136  
Douthit Hills Student Community, Clemson University Project  
Tony Greene





## CURRENT CONSTRUCTION ACTIVITIES

### EAST ZONE & SITE

- Completed Spreading Topsoil South of Building A.
- Completed Grading at the Perimeter of Building D.
- Completed Grading between Buildings B & D.
- Completed Brick Masonry at the Pedestrian Bridge.
- Completed Brick Columns at Building B Pool Deck.
- Completed Trench Drain Tie-ins at the HUB.
- Completed Setting Electrical Panel at HUB Lift Station.
- Continued Punch List in Buildings G, F, & E.
- Continued Site Punch List in East Zone.
- Continued Drip Edge in the West Zone.
- Continued Setting Pole Lights for the West Zone.
- Continued Bricking Manholes to Grade in West Zone.
- Began Brick Masonry at Building D Stair Walls.

### WEST ZONE & HUB

- Completed Carpet Installation on A5.
- Completed Tile in Public Bathrooms on BL1 & B1.
- Completed Overhead Rough-in at B1 Offices.
- Completed Installation of Ceiling Grid on B2 & CL1.
- Completed Programming of FCUs on C4.
- Continued Signing off Punch List in Building A.
- Continued MEP Trim-out on B6, C4, & D2.
- Continued Installation of Millwork on C3.
- Continued Finishing Ceilings on C5 & D3.
- Continued MEP Rough-In on D4.
- Continued Installation of Elevator in Buildings C & D.
- Continued MEP Rough-in at HUB Starbucks.
- Began Installation of Ceiling Grid on B4.
- Began LVT Installation on C2.
- Began Installation of Millwork on D2.



Construction Clean B1



Drip Edge Progress West Zone



## NEXT WEEK'S ACTIVITIES

### EAST ZONE & SITE

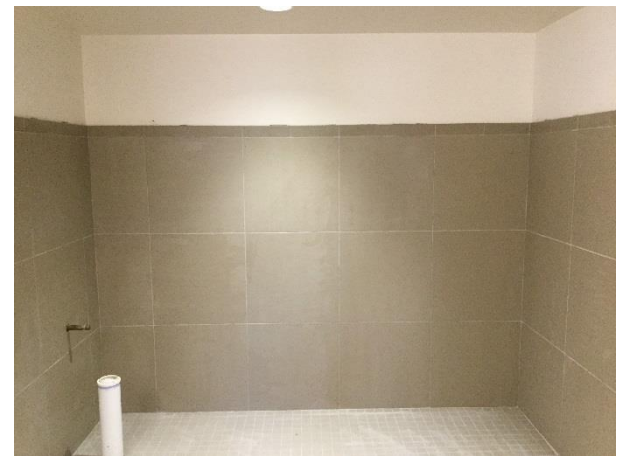
- Complete Deck Pour at Building B Pool.
- Complete Pouring Walls at Building C Stairs.
- Complete Pouring Pole Bases South of Building C.
- Complete Curb & Gutter North of Building D.
- Complete Lighting Raceway North of Building D.
- Complete Roof Downspout Tie-ins at Building D.
- Complete FDC for Building D & HUB.
- Continue Punch List in Buildings G, F, & E.
- Continue Site Punch List in East Zone.
- Continue Bricking Manholes to Grade in West Zone.
- Continue Spreading Topsoil at West Zone Perimeter.
- Begin Stair Construction on the East Side of Building C.

### WEST ZONE & HUB

- Complete Installation of Ceiling Grid on B3.
- Complete Installation of Millwork on C4.
- Complete MEP Trim Out on D2.
- Continue Signing off Punch List in Building A.
- Continue MEP Trim-out on B6 & C4.
- Continue MEP Trim-out on C5.
- Continue MEP Rough-In on D5 & D6.
- Continue Installation of Elevator in Buildings C & D.
- Continue Installation of Ceiling Grid on B4 & C2
- Continue Priming on D3.
- Continue MEP Rough-in at HUB Starbucks.
- Begin Punch on B1 and B2 Units.
- Begin Hanging Pre-finished Doors on C5.
- Begin Millwork Installation on C4 & D3.



MEP Trim Out B1



Public Bathroom Tile B1



# WEATHER

CURRENT WEEK

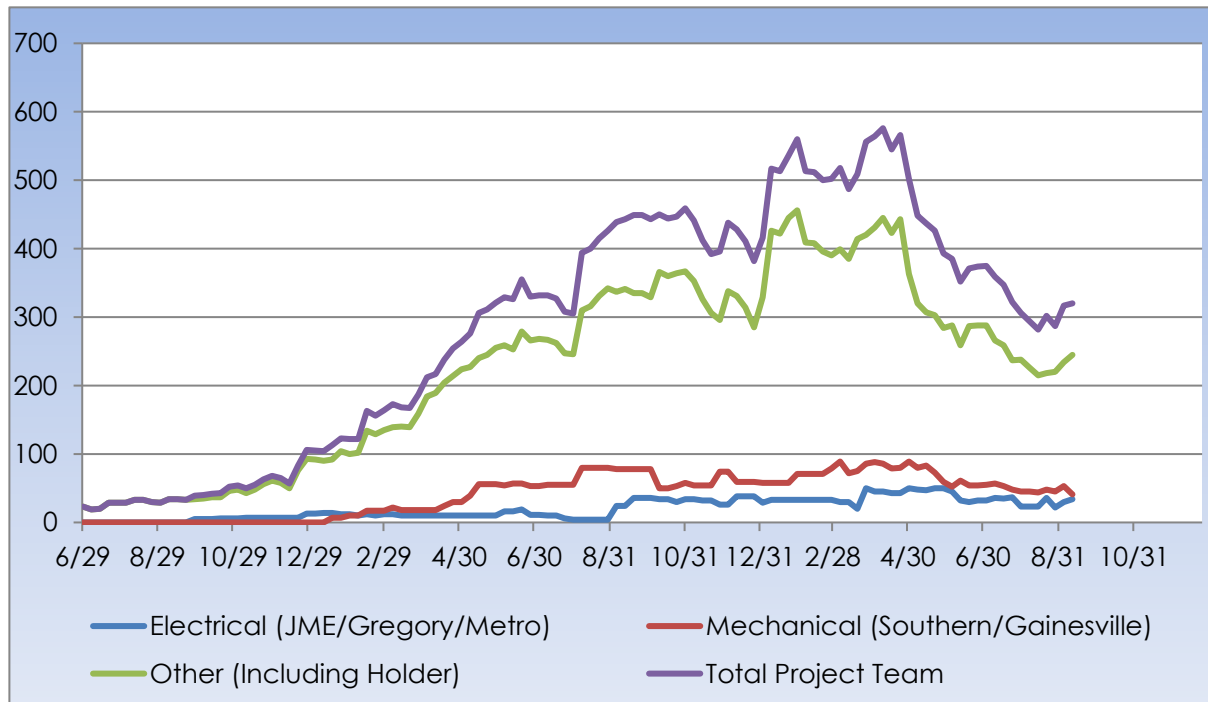
|   |   |   |  |   |
|---|---|---|--|---|
| <b>11</b> Rain<br>Actual: <b>63°</b>   <b>57°</b><br>0.92 in<br>Average: <b>83°</b>   <b>60°</b><br>0.12 in | <b>12</b> Rain<br>Actual: <b>66°</b>   <b>62°</b><br>0.65 in<br>Average: <b>84°</b>   <b>61°</b><br>0.11 in | <b>13</b> Rain<br>Actual: <b>78°</b>   <b>60°</b><br>0.00 in<br>Average: <b>84°</b>   <b>61°</b><br>0.14 in | <b>14</b> Overcast<br>Forecast: <b>79°</b>   <b>62°</b><br>0.0 in<br>Average: <b>84°</b>   <b>60°</b><br>0.21 in | <b>15</b> Clear<br>Forecast: <b>83°</b>   <b>65°</b><br>0.0 in<br>Average: <b>83°</b>   <b>60°</b><br>0.05 in |
|---|---|---|--|---|

Rain Days This Week = 2      Rain Days to Date = 83



# MANPOWER

TOTAL PROJECT LABOR





## MANPOWER

### TOTAL PROJECT LABOR

| TRADE CONTRACTORS ON-SITE        |                          |                     |
|----------------------------------|--------------------------|---------------------|
| Subcontractor                    | Trade                    | Number of Employees |
| Holder Construction Company      | General Contractor       | 24                  |
| Accessories Unlimited            | Accessories              | 2                   |
| Brightview Landscape Development | Hardscape & Landscape    | 14                  |
| Cabinets By Design               | Millwork                 | 10                  |
| Carolina Fire Protection         | Sprinklers               | 4                   |
| Elite Flooring                   | Tile                     | 0                   |
| Feltman Brothers                 | Masonry - West           | 0                   |
| First Choice Glass               | Glazing                  | 0                   |
| Gainesville Mechanical           | Mechanical               | 0                   |
| Gill Plumbing                    | Plumbing                 | 23                  |
| Gregory Electric                 | Electrical – HUB         | 9                   |
| Johnson Controls                 | Controls                 | 5                   |
| Johnsons Modern Electric         | Electrical               | 22                  |
| King Asphalt                     | Asphalt                  | 0                   |
| Kone                             | Elevators                | 6                   |
| Labor Finders                    | Labor Force              | 12                  |
| Metro Power                      | Sitework Electrical      | 3                   |
| Nations Roofing                  | Roofing                  | 0                   |
| Precision                        | Concrete                 | 6                   |
| Professional Door                | Doors & Hardware         | 4                   |
| Pyramid Masonry                  | Masonry - HUB            | 5                   |
| Reeves Young                     | Site Grading & Utilities | 7                   |
| Sears Contract                   | Drywall/Metal Trusses    | 98                  |
| Sentential Maintenance           | Construction Cleaning    | 4                   |
| Simplex                          | Controls                 | 5                   |
| Southern Mechanical Inc.         | Mechanical/Plumbing      | 41                  |
| Specialty Finishes               | Painting                 | 13                  |
| Staff Zone                       | Labor Force              | 2                   |
| Steel Toe                        | Labor Force              | 1                   |
| <b>TOTAL</b>                     |                          | <b>320</b>          |



## SAFETY REPORT

- Total Man Hours Worked This Week: 15,280
- Total Man Hours on Project: 1,575,833
- Crafts On Project This Week: 18



## INSPECTIONS/TESTING REPORT

- CC&I – Overhead Inspection – B1 Offices
- CC&I – Shaft Inspections – CL1 through C5
- CC&I – Mastic Inspection – D5
- BLE – Rebar Inspection & Concrete Testing – Building C Stair Wall Footings



## ENVIRONMENTAL REPORT

- Pursuing LEED Silver Certification
- Waste Diverted = 21,215 CY