



HOLDER CONSTRUCTION COMPANY

Superintendent's Weekly Activity Report #135
Douthit Hills Student Community, Clemson University Project
Tony Greene





CURRENT CONSTRUCTION ACTIVITIES

EAST ZONE & SITE

- Received Certificate of Occupancy for Bldgs E, F, & G.
- Completed Spreading Topsoil North of Building B.
- Completed Footings at Building C Stair Walls.
- Completed Grading at the Perimeter of Building D.
- Continued Punch List in Buildings G, F, & E.
- Continued Site Punch List in East Zone.
- Continued Spreading Topsoil South of Bldgs A & C.
- Continued Brick Masonry at the Pedestrian Bridge.
- Continued Setting Pole Lights for the West Zone.
- Began Brick Columns at Building B Pool Deck.



Certificate of Occupancy Received in the East Zone

WEST ZONE & HUB

- Completed Final Painting Walls on A5.
- Completed Installation of Ceiling Grid on B1.
- Completed Installation of LVT on B6.
- Completed Priming Walls on C5.
- Continued Signing off Punch List in Building A.
- Continued MEP Trim-out on B6, C4, & D1.
- Continued Installation of Millwork on C3.
- Continued Ceiling Grid in Building C.
- Continued Finishing Ceilings on C5 & D3.
- Continued MEP Rough-In on C5 & D4.
- Continued Installation of Elevator in Buildings C & D.
- Continued Electrical Trim out on D1.
- Continued MEP Rough-in at Starbucks.
- Began Installing Carpet on A4.
- Began Installation of Millwork on D1.



Masonry Columns at Building B Pool Deck



NEXT WEEK'S ACTIVITIES

EAST ZONE & SITE

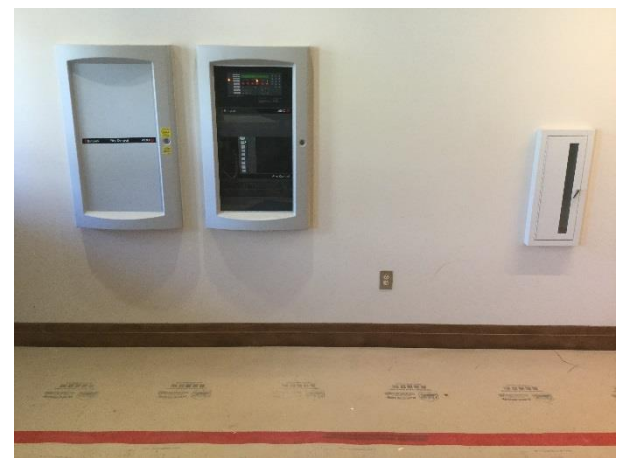
- Complete Brick Columns at Building B Pool Deck.
- Complete Walls at Building C Stairs.
- Complete Grading between Buildings B & D.
- Complete Curb & Gutter North of Building D.
- Complete Trench Drain Tie-ins at the HUB.
- Complete Brick Masonry at the Pedestrian Bridge.
- Continue Punch List in Buildings G, F, & E.
- Continue Site Punch List in East Zone.
- Continue Spreading Topsoil at Bldg. A & B Perimeter.
- Continue Setting Light Poles in the West Zone.
- Begin Brick Masonry at Building D Stair Walls.
- Begin Roof Downspout Tie-ins at Building D.

WEST ZONE & HUB

- Complete Hanging Pre-finished Doors on B6.
- Complete Installation of Millwork on C3.
- Complete MEP Trim Out on D2.
- Continue Signing off Punch List in Building A.
- Continue MEP Trim-out on B6 & C4.
- Continue Finishing Ceilings on C5.
- Continue MEP Rough-In on C5 & D4.
- Continue Installation of Elevator in Buildings C & D.
- Continue Installation of Ceiling Grid on B2 & C1.
- Continue Installation of LVT on CL1.
- Continue Finishing Ceilings on D3.
- Continue MEP Rough-in at HUB Starbucks.
- Begin MEP Trim-out on C5.
- Begin Hanging Pre-finished Doors on C5.
- Begin Millwork Installation on C4 & D2.



Footing Prep at Building C Steps



Wood Base Installed and Fire Alarm Testing in Building A



WEATHER

CURRENT WEEK

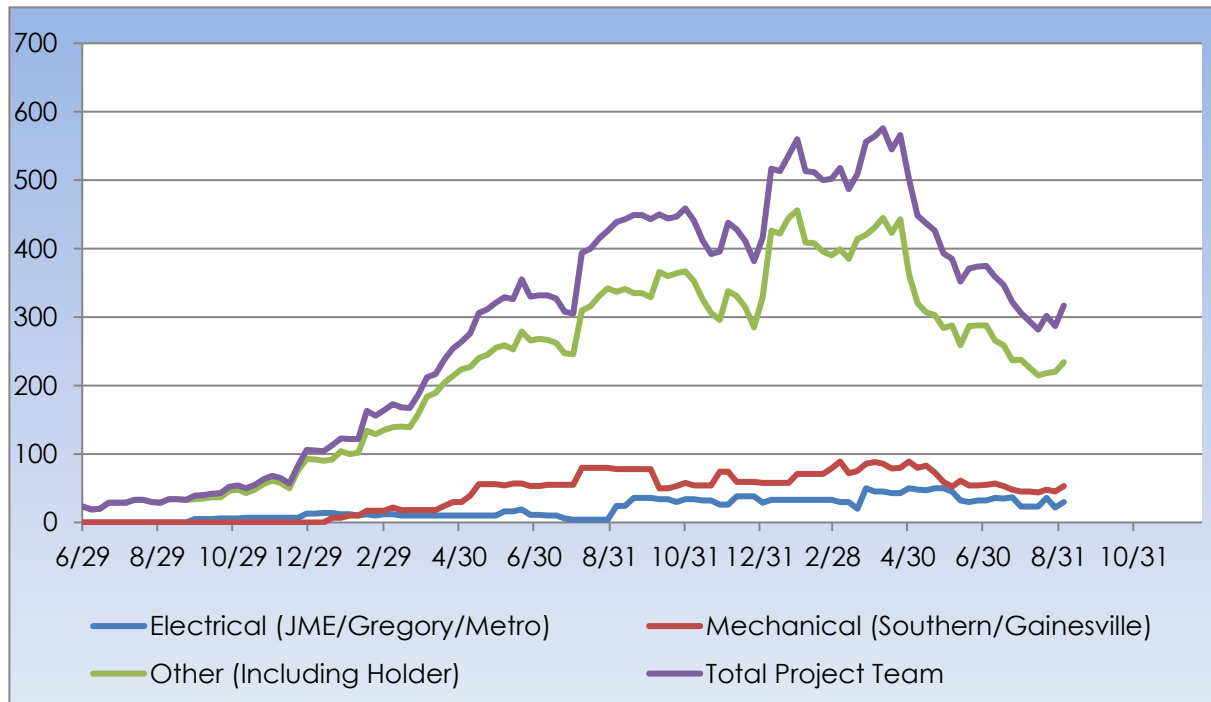
4 Clear Actual: 84° 61° 0.00 in Average: 85° 65° 0.24 in	5 Tstorm Actual: 87° 64° 0.25 in Average: 84° 64° 0.16 in	6 Tstorm Actual: 73° 63° 0.36 in Average: 84° 63° 0.10 in	7 Fog Forecast: 77° 56° 0.0 in Average: 84° 63° 0.12 in	8 Clear Forecast: 79° 59° 0.0 in Average: 84° 63° 0.27 in
---	--	--	--	--

Rain Days This Week = 2 Rain Days to Date = 81



MANPOWER

TOTAL PROJECT LABOR





MANPOWER

TOTAL PROJECT LABOR

TRADE CONTRACTORS ON-SITE		
Subcontractor	Trade	Number of Employees
Holder Construction Company	General Contractor	24
Accessories Unlimited	Accessories	2
Brightview Landscape Development	Hardscape & Landscape	10
Cabinets By Design	Millwork	10
Carolina Fire Protection	Sprinklers	4
Elite Flooring	Tile	0
Feltman Brothers	Masonry - West	5
First Choice Glass	Glazing	0
Gainesville Mechanical	Mechanical	5
Gill Plumbing	Plumbing	23
Gregory Electric	Electrical – HUB	7
Johnson Controls	Controls	5
Johnsons Modern Electric	Electrical	20
King Asphalt	Asphalt	0
Kone	Elevators	6
Labor Finders	Labor Force	12
Metro Power	Sitework Electrical	3
Nations Roofing	Roofing	0
Precision	Concrete	0
Professional Door	Doors & Hardware	5
Pyramid Masonry	Masonry - HUB	5
Reeves Young	Site Grading & Utilities	7
Sears Contract	Drywall/Metal Trusses	93
Sentential Maintenance	Construction Cleaning	3
Simplex	Controls	4
Southern Mechanical Inc.	Mechanical/Plumbing	48
Specialty Finishes	Painting	14
Staff Zone	Labor Force	3
Steel Toe	Labor Force	1
Tree South	Arborist	0
TOTAL		319



SAFETY REPORT

- Total Man Hours Worked This Week: 15,110
- Total Man Hours on Project: 1,560,553
- Crafts On Project This Week: 19



INSPECTIONS/TESTING REPORT

- CC&I – Entrance Soffits – B5 & B6
- CC&I – Corridor Overhead Inspection – B1 & C5
- CC&I – Shaft Inspections – C1 through C5
- CC&I – Overhead Inspection – D3
- BLE – Rebound Hammer Test – E Firelane



ENVIRONMENTAL REPORT

- Pursuing LEED Silver Certification
- Waste Diverted = 21,215 CY