



HOLDER CONSTRUCTION COMPANY

Superintendent's Weekly Activity Report #133
Douthit Hills Student Community, Clemson University Project
Tony Greene





CURRENT CONSTRUCTION ACTIVITIES

EAST ZONE & SITE

- Turned All East Zone Parking Lots Over to Clemson.
- Completed Trench Drain on Bradley Road.
- Completed Pouring Walls for Building D Stairs.
- Completed Pouring of Sidewalks South of Building A.
- Completed Pouring Pole Bases on Perimeter of A & B.
- Completed Trench Drains and Curbs at Building B Pool.
- Continued Site Punch List in East Zone.
- Continued Punch List in Buildings G, F, & E.
- Continued Commissioning in Building E.
- Began Hardscapes South of Building C.
- Began Grading between Buildings A & C.
- Began Grading North of Building D.
- Began Brick Masonry at the Pedestrian Bridge.



Pedestrian Bridge Brick Masonry

WEST ZONE & HUB

- Completed Caulking Nichiha Panels at Bldg. A Terrace.
- Completed Wood Flooring on A4 Lounge.
- Completed Programming FCUs on B5.
- Completed Hanging Pre-finished Doors on B2, B3, & B4.
- Continued Signing off Punch List in Building A.
- Continued Final Painting Walls on A3.
- Continued Installation of LVT on B4.
- Continued Installation of Ceiling Grid on B1.
- Continued MEP Trim-out on B6 & C4.
- Continued Installation of Millwork on C3.
- Continued Finishing Ceilings on C5 & D2.
- Continued MEP Rough-In on C5 & D3.
- Continued Installation of Elevator in Buildings C & D.
- Continued MEP Rough-in at Starbucks.
- Completed Electrical Trim out on Floor D1.



Carpet Installation Complete on A1



NEXT WEEK'S ACTIVITIES

EAST ZONE & SITE

- Complete Hardscapes South of Building C.
- Complete Grading between Buildings A & C.
- Complete Grading between Buildings B & D.
- Complete Grading at the perimeter of Building D.
- Complete Trench Drain Tie-ins at the HUB.
- Complete Brick Masonry at the Pedestrian Bridge.
- Continue Light Pole Tie-ins for the West Zone.
- Continue Site Punch List in East Zone.
- Continue Punch List in Buildings G, F, & E.
- Continue Commissioning in Building E.
- Begin Building B Pool Deck Construction.
- Begin Footings at Building C Stairs.



Hardscapes South of Building A

WEST ZONE & HUB

- Complete Hanging Ceilings in Building B Lobby.
- Complete Installation of Millwork on C3.
- Complete Installation of Ceiling Grid on B1.
- Continue Signing off Punch List in Building A.
- Continue Final Painting Walls on A4.
- Continue Hanging Pre-finished Doors on B5 & B6.
- Continue Installation of LVT on B5.
- Continue MEP Trim-out on B6 & C4.
- Continue Finishing Ceilings on C5 & D2.
- Continue MEP Rough-In on C5 & D3.
- Continue MEP Trim Out on D1.
- Continue Installation of Elevator in Buildings C & D.
- Continue MEP Rough-in at HUB Starbucks.
- Begin Ceiling Grid in Building C.



Ceiling Rough-in B1 Corridor



WEATHER

CURRENT WEEK

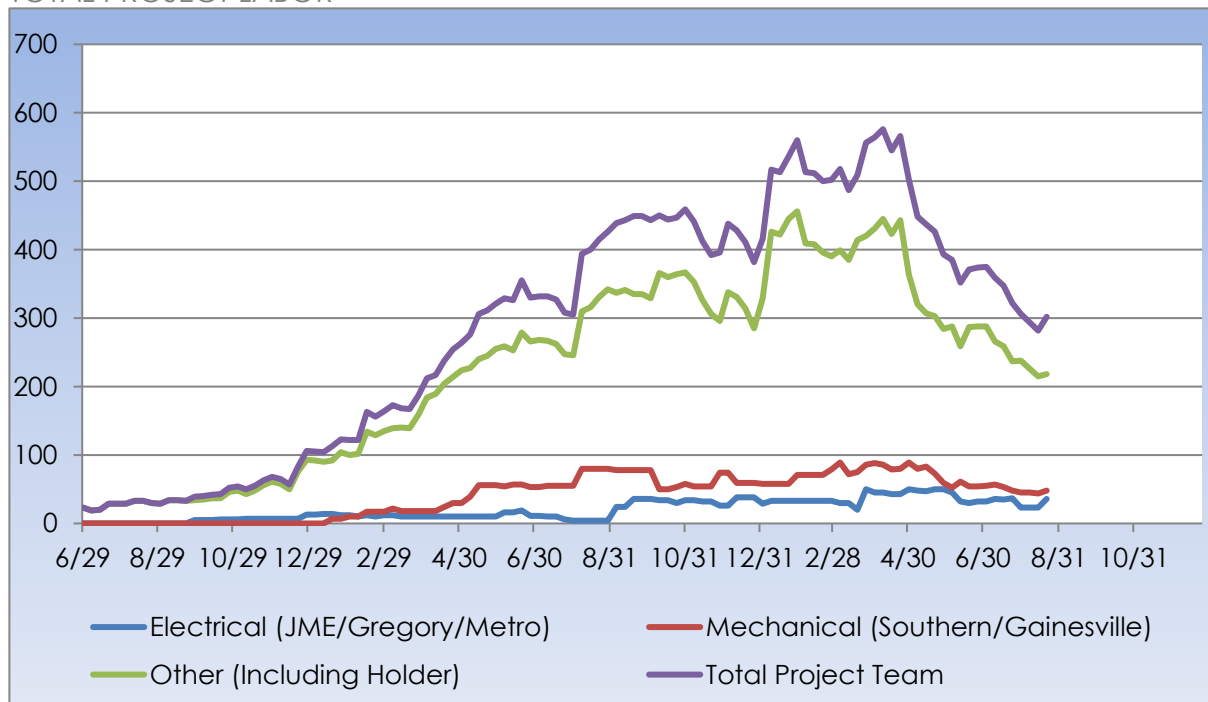
21	22	23	24	25
Scattered Clouds	Scattered Clouds	Scattered Clouds	Partly Cloudy	Partly Cloudy
Actual: 93° 73° 0.00 in	Actual: 93° 72° 0.00 in	Actual: 93° 73° 0.00 in	Actual: 90° 72° 0.00 in	Forecast: 87° 68° 0.0 in
Average: 88° 66° 0.17 in	Average: 87° 65° 0.17 in	Average: 86° 66° 0.17 in	Average: 86° 66° 0.13 in	Average: 87° 66° 0.12 in

Rain Days This Week = 0 Rain Days to Date = 77



MANPOWER

TOTAL PROJECT LABOR





MANPOWER

TOTAL PROJECT LABOR

TRADE CONTRACTORS ON-SITE		
Subcontractor	Trade	Number of Employees
Holder Construction Company	General Contractor	24
Accessories Unlimited	Accessories	2
Brightview Landscape Development	Hardscape & Landscape	10
Cabinets By Design	Millwork	9
Carolina Fire Protection	Sprinklers	4
Elite Flooring	Tile	0
Feltman Brothers	Masonry - West	0
First Choice Glass	Glazing	0
Gainesville Mechanical	Mechanical	0
Gill Plumbing	Plumbing	29
Gregory Electric	Electrical – HUB	6
Johnson Controls	Controls	4
Johnsons Modern Electric	Electrical	22
King Asphalt	Asphalt	0
Kone	Elevators	6
Labor Finders	Labor Force	12
Metro Power	Sitework Electrical	8
Nations Roofing	Roofing	0
Precision	Concrete	0
Professional Door	Doors & Hardware	5
Pyramid Masonry	Masonry - HUB	5
Reeves Young	Site Grading & Utilities	8
Sears Contract	Drywall/Metal Trusses	71
Sentential Maintenance	Construction Cleaning	5
Simplex	Controls	6
Southern Mechanical Inc.	Mechanical/Plumbing	48
Specialty Finishes	Painting	14
Staff Zone	Labor Force	3
Steel Toe	Labor Force	1
Tree South	Arborist	0
TOTAL		302



SAFETY REPORT

- Total Man Hours Worked This Week: 14,290
- Total Man Hours on Project: 1,531,893
- Crafts On Project This Week: 18



INSPECTIONS/TESTING REPORT

- CC&I – Bulkhead & Firepump Room Inspection – Building A
- CC&I – Framing & In-wall Rough-in Inspection – Building C Lobby



ENVIRONMENTAL REPORT

- Pursuing LEED Silver Certification
- Waste Diverted = 21,215 CY