



# Core Campus Fort Hill Street Closure

James Bonney  
Housing & Dining  
Associate Director of Projects

October 16<sup>th</sup>, 2014

**Fort Hill St. Closed  
Oct. 26<sup>th</sup> to Nov. 21<sup>st</sup>**



Creating the nation's most engaged, satisfied and successful student body

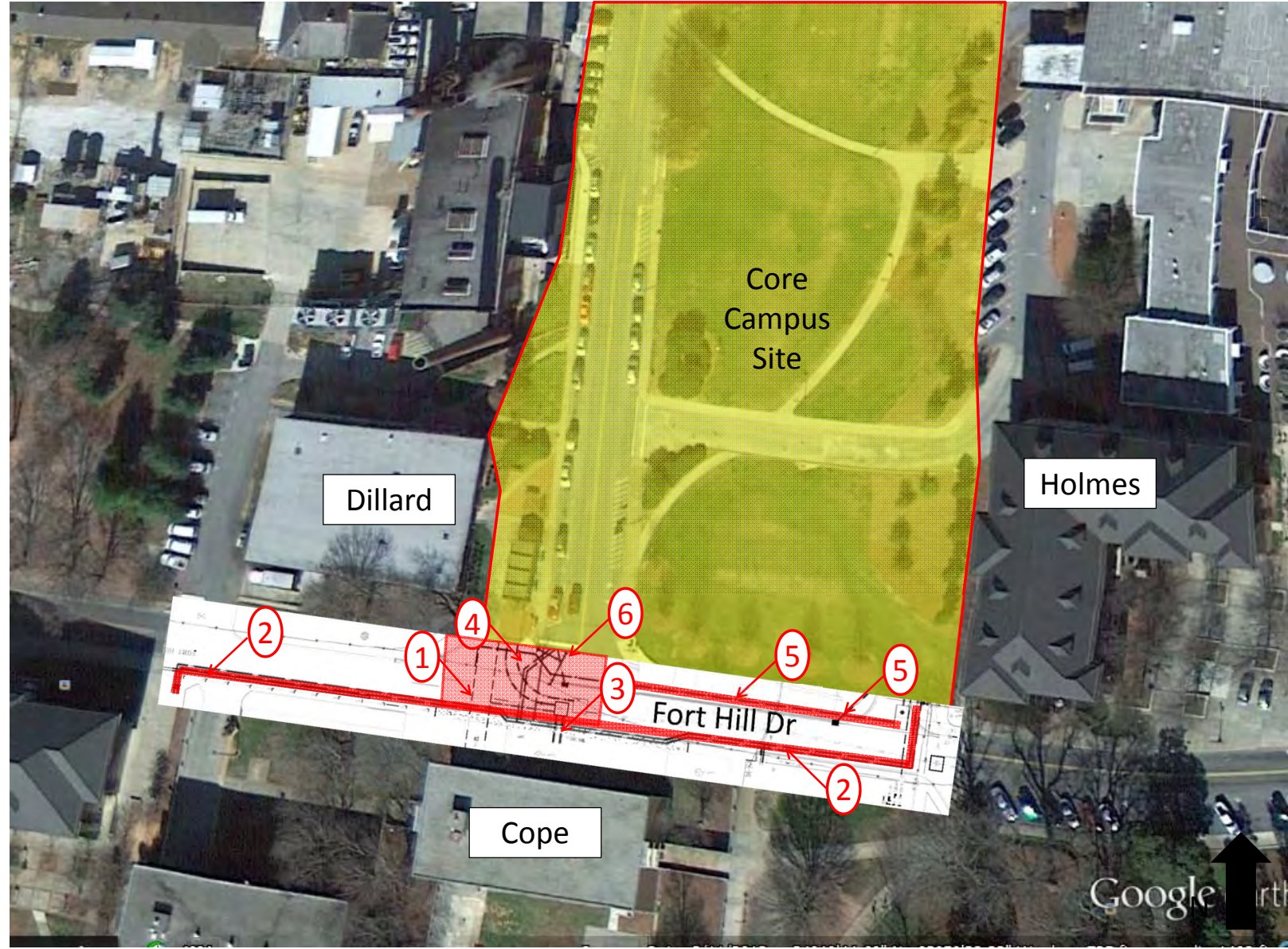
# Agenda

1. Fort Hill Utility Relocation
2. Fort Hill Utility Construction Plan
3. Pedestrian Route Plan
4. Bus Route Plan
5. Fire Access Plan
6. Communication Plan



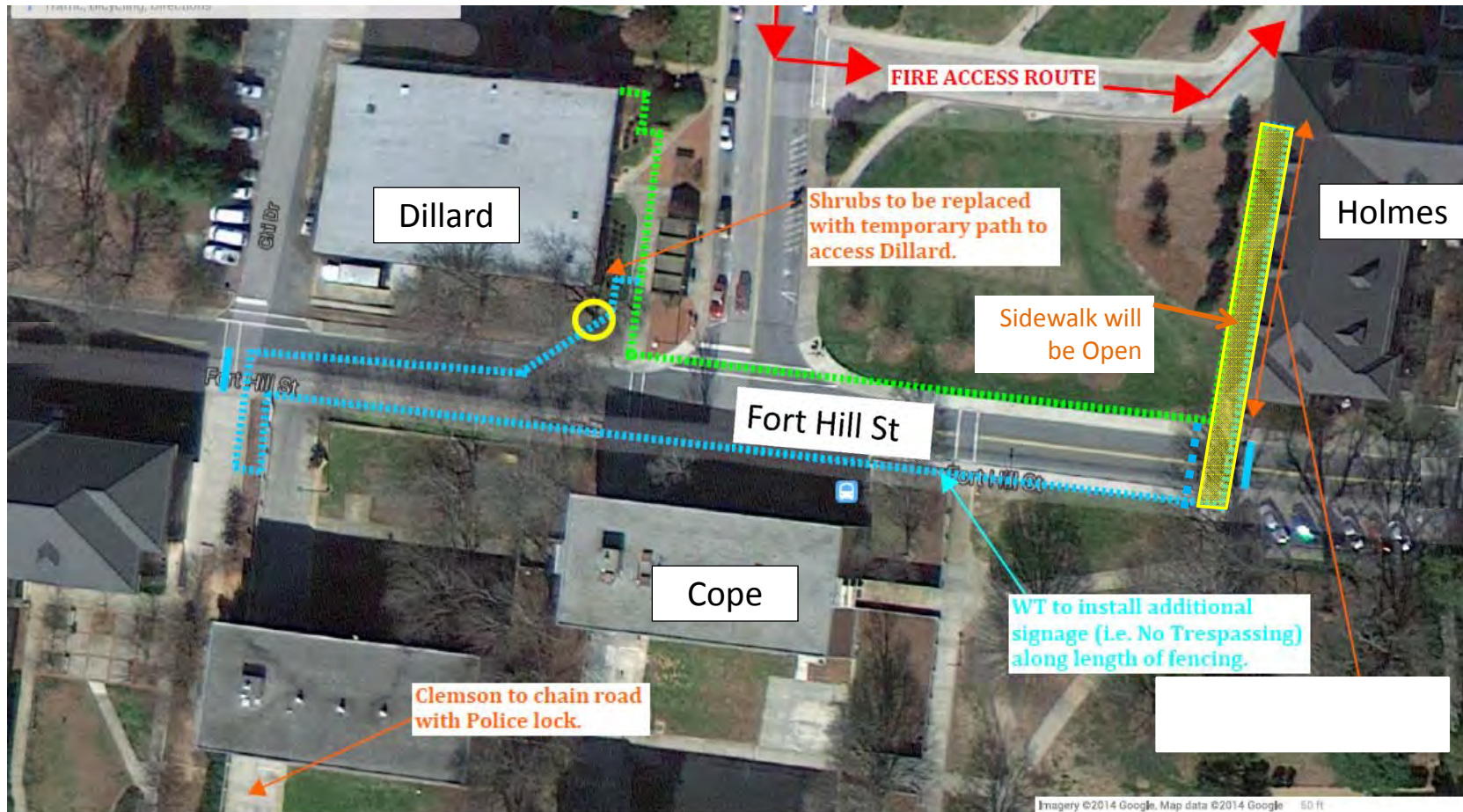
# Fort Hill Utility Relocation Plan

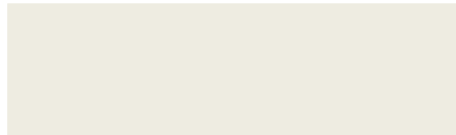
- ① Tunnel Reinforcement
- ② Chilled Water
- ③ Electrical Ductbank
- ④ Telecom Ductbank
- ⑤ Storm Sewer
- ⑥ Domestic Water





# Fort Hill Utility Construction Plan (WT)



- ..... W-T Temporary Site Fencing
  - ..... Fort Hill Temporary Closure Fencing
  - Barricade/Jersey Barrier
- 

**Fort Hill St. Closed  
Oct. 26<sup>th</sup> to Nov. 21<sup>st</sup>**

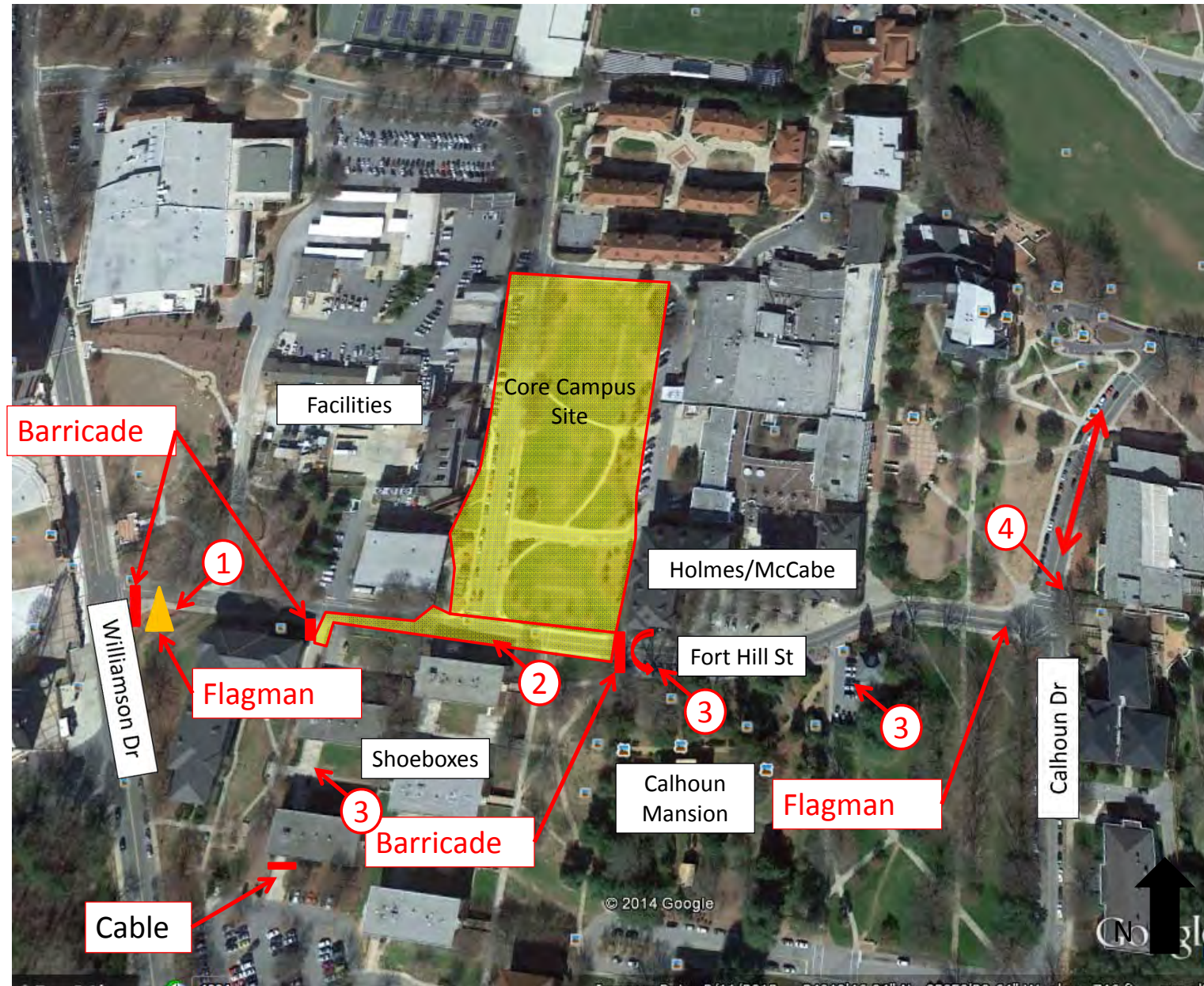




# Fort Hill Utility Construction Plan

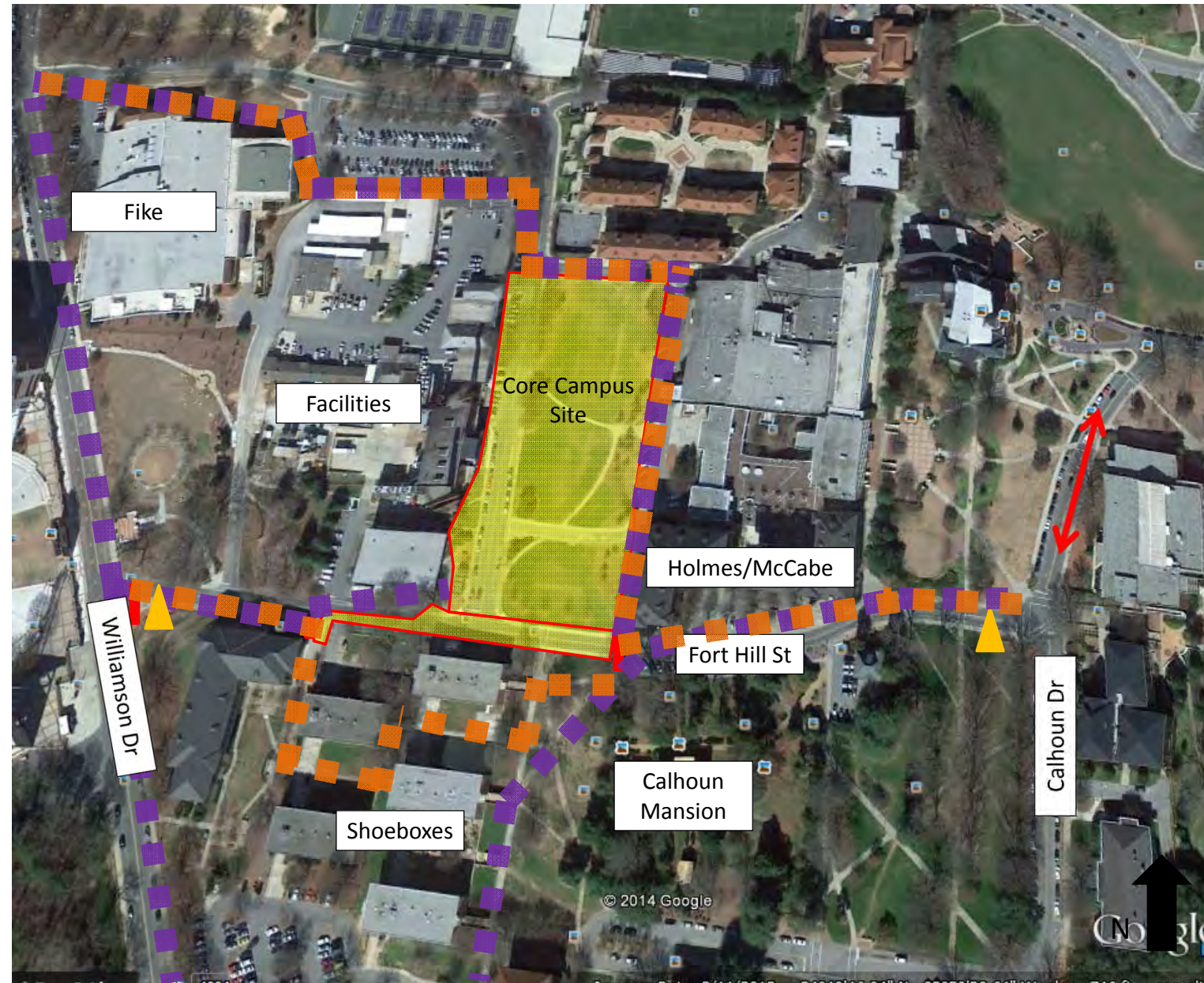
**Note:**

1. Emergency, Delivery, ADA, Special Permit, & Service Vehicle Only Beyond Barricade at Fort Hill St/Williamson Dr.
2. Fort Hill sidewalks at work site will not be closed. Temporary pedestrian route signage will be posted (See temp pedestrian plan.)
3. Parking along Fort Hill between work site and Calhoun Dr will be open. A turnaround will be established near worksite.
4. The barricade west of Brackett along Calhoun Dr will be open allowing two way traffic.
5. Roadways will be graveled at a minimum by Noon Nov. 21<sup>st</sup> for Legacy Day at Calhoun Mansion.
6. Alternate Fire Access Routes will be established (See temp fire access plan).
7. Alternate Bus Routes will be established (See temp Bus plan).





# Fort Hill Closure Pedestrian Access Plan

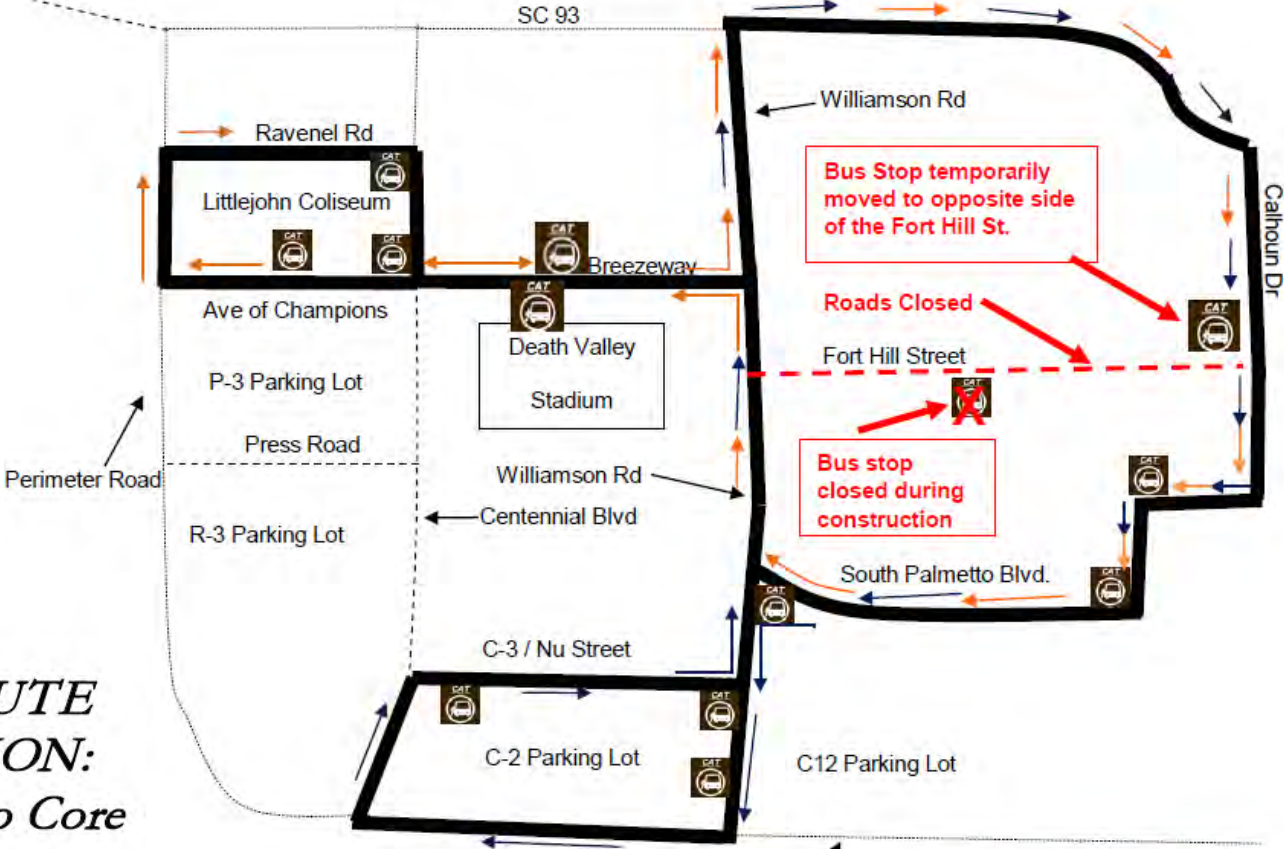


- Most Direct Pedestrian Route (Not ADA)
- ADA Accessible Access Route

**Fort Hill Closed  
Oct. 26<sup>th</sup> to Nov. 21<sup>st</sup>**

# Fort Hill Closure Bus Route Plan

 = CAT Bus stop



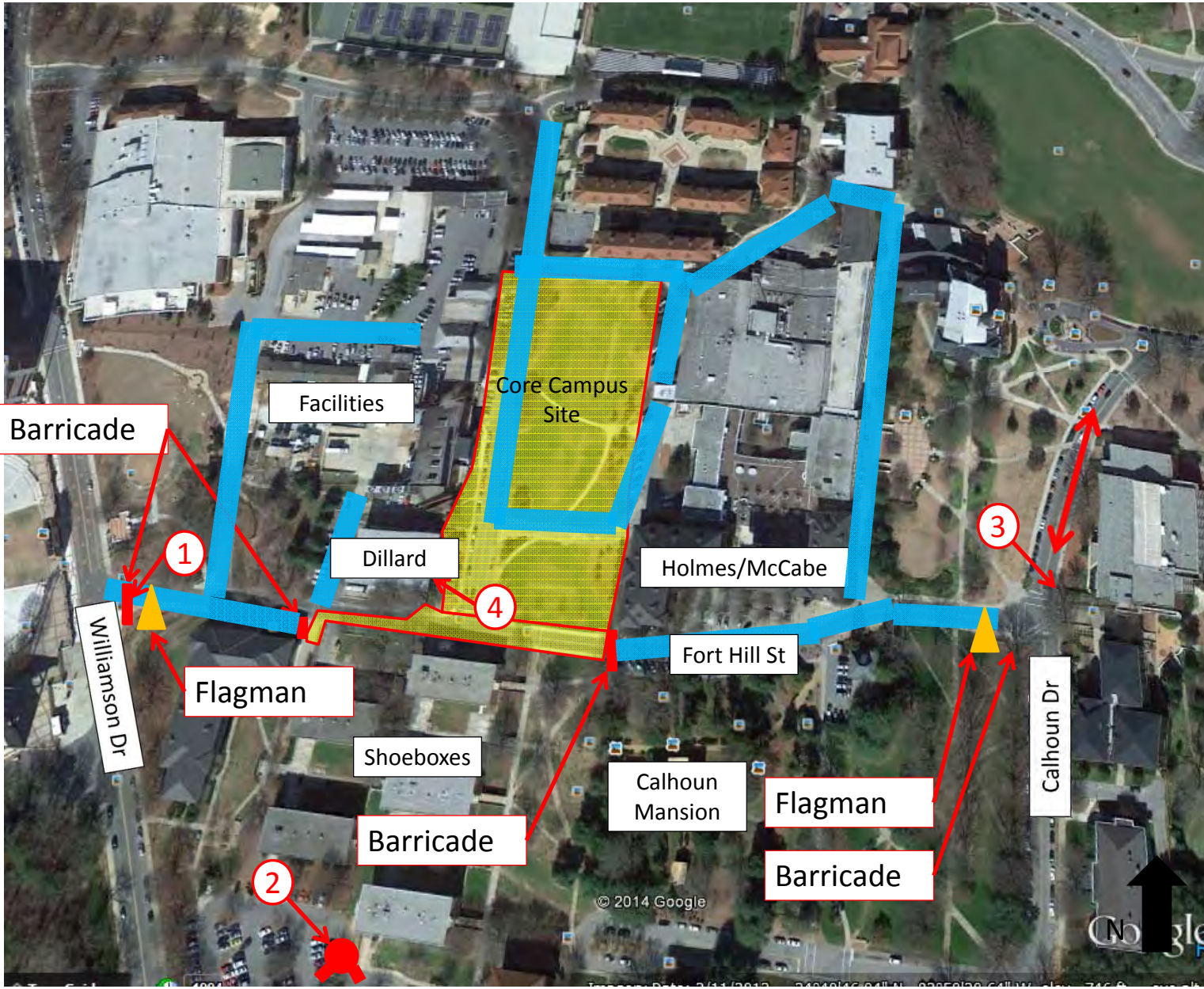
**ATTENTION:**  
**ORANGE & PURPLE ROUTE**  
**WEST CAMPUS DEVIATION:**  
*Fort Hill Street Closed Due to Core Campus Construction*  
*Sunday 10/26/14 – Friday 11/21/14*





# Fort Hill Closure Fire Access Plan

- Note:
1. Center Plastic Jersey Barrier will be removable at Williamson Rd & Fort Hill St.
  2. South shoebox FDC will be utilized.
  3. The barricade west of Brackett along Calhoun Dr will be open allowing two way traffic.
  4. Dillard Hall main floor east access and egress will be maintained.

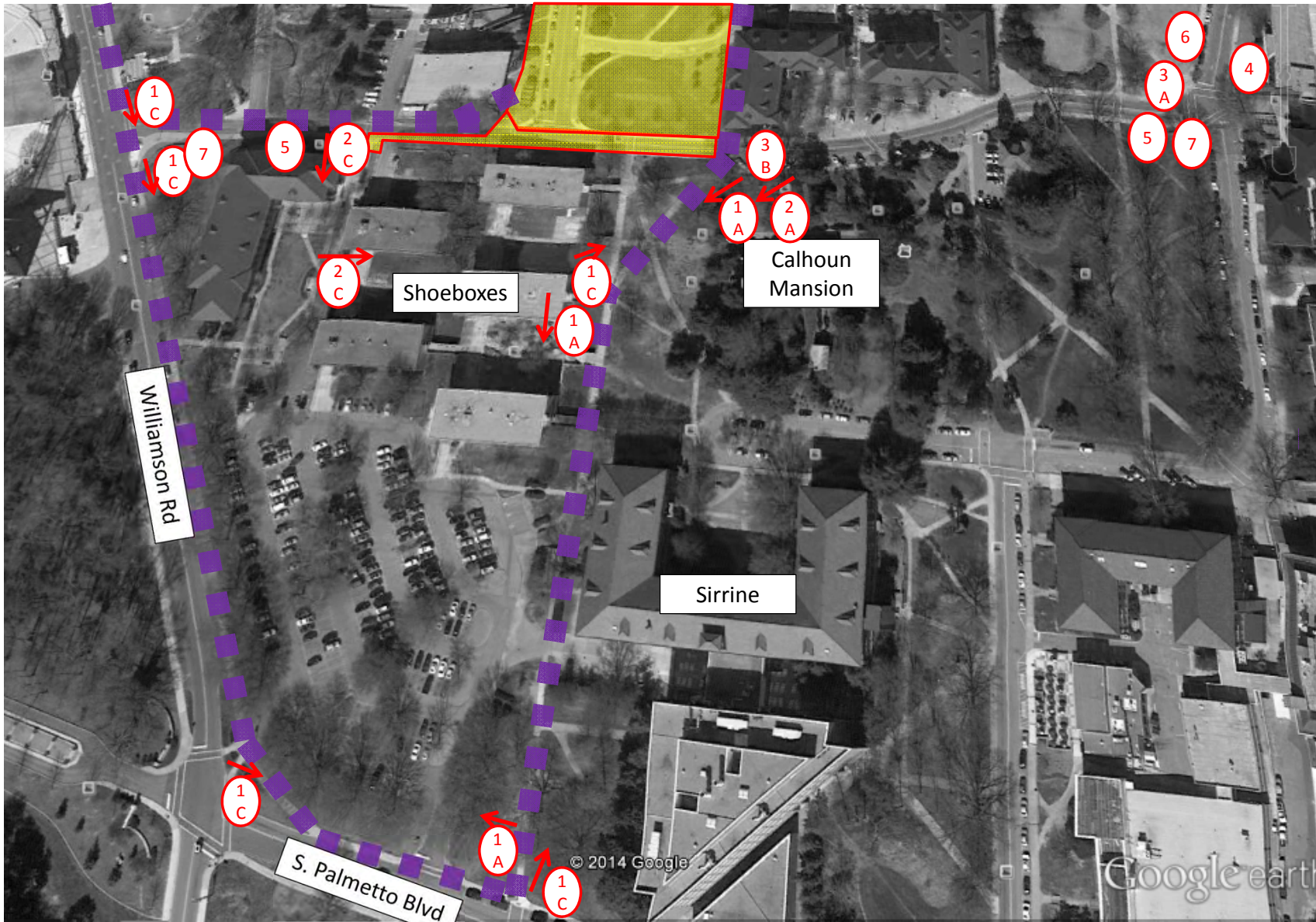


█ Fire Access Route

**Fort Hill Closed  
Oct. 26<sup>th</sup> to Nov. 21<sup>st</sup>**

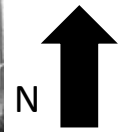


# South ADA Route & Signage Plan



←  
# Signage

■ ADA Accessible Access Route





# North ADA Route & Signage Plan



←  
# Signage

■ ADA Accessible Access Route





# Fort Hill Closure Communication Plan

- Email
  - Inside Clemson (Faculty & Staff)
  - Student Government Email (Students)
  - Detailed Correspondence to Dillard, Holmes, McCabe, Shoeboxes, Quad, Stadium Suites, Calhoun Mansion, Brackett, Trustee House Occupants
  - Building Security Coordinators
- Website, Facebook, Twitter
  - Inside News
  - Facility Disruption Calendar
  - Student Affairs Website
  - Housing & Dining Website
  - Parking & Transportation Website
  - CU Parent Website
  - Clemson Student Website

Fort Hill Closed  
Oct. 26<sup>th</sup> to Nov. 21<sup>st</sup>

# Thank You

- James Bonney
- 706-725-9109
- [jbonney@clemson.edu](mailto:jbonney@clemson.edu)